

-FUJIOH-

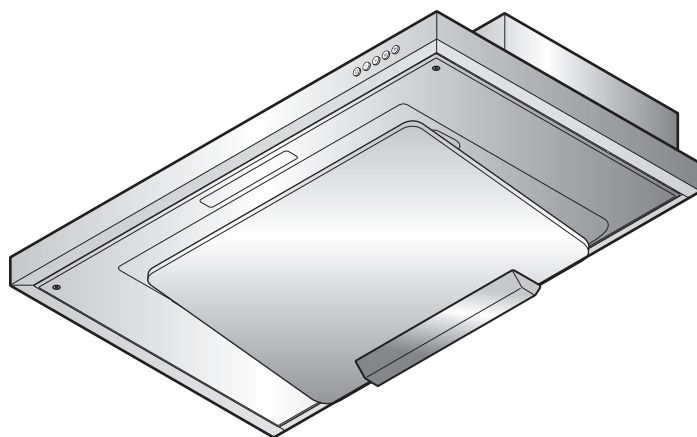
Cooker Hood

MADE IN
JAPAN
日本製

FR-FS2270/90VP
(Ventilating type)

FR-FS2290RP
(Recycling type)

Installation/Operation Manual



English page 1~20

简体中文 21 ~ 40 页

繁體中文 41 ~ 60 頁

TABLE OF CONTENTS

■ Safety Precautions.....2~4	Operation checking 14
Precautions on use 4	■ Maintenance 14~18
■ Preparation.....5, 6	Precautions for maintenance..... 15
Name of parts5	Detaching/Attaching of parts
Switch6	to be cleaned 15~17
■ Installation7~14	Cleaning..... 18
Preparation and checking	■ Other Information 18, 19
before installation..... 7, 8	Specifications 18
Preparation before installation... 9, 10	Circuit diagram 19
Cooker hood installation 10~13	Service and warranty 19
Reattaching the removed parts... 13, 14	

To the sales shop/installer:
after installation, please
provide this manual to the
user without fail.

Thank you very much for purchasing our cooker hood.

**Please read this manual thoroughly before installing/operating
the cooker hood.**

Keep this manual properly for future reference after reading.

1F02 2881



Safety Precautions

- Read the following safety precautions before installation and operation, and use the cooker hood properly and securely.
- These safety precautions are for correct operation of the product, preventing any harm or damage to yourself or others. These safety precautions are classified into 2 categories (“WARNING” and “CAUTION”) depending on their hazard and severity. Please pay attention and strictly observe these safety precautions as they are crucial to safety.













WARNING

Alerts possible risk of **serious injury**, if not observed.

CAUTION

Alerts possible risk of **injury** or **physical damage**, if not observed.

WARNING

- | | | |
|---|--|---|
|  | Less than 4 burners | ● The cooker hood is intended to be installed over a hob with up to four hob elements or burners. |
|  | Disassembly, repair, or modification prohibition | ● Never attempt to disassemble, repair or modify.
Always seek help from a qualified technician. Otherwise, there may be fire, electric shock or abnormal conditions. |
|  | Prohibition on use | ● Do not use in regions where the power voltage exceeds 220V/230V/240V AC.
Otherwise, there may be fire hazards or electric shock. |
|  | Caution during assembly | ● Electric wiring shall be carried out properly by professional technician or personnel.
Incorrect wiring may cause electric leakage or fire hazards. |
|  | Caution during installation | ● Installation work should be performed by a minimum of 2 persons.
The weight of the cooker hood is about 15kg (FR-FS2270VP), 17kg (FR-FS2290VP), 18kg (FR-FS2290RP). |
|  | Caution during installation | ● Breakers shall be incorporated in the fixed wiring to ensure all-pole disconnection from the main power source. |
|  | Disconnection of the power plug | ● Be sure to disconnect the power plug from the outlet, or switch off the breaker during maintenance. Also, never handle the power plug or breaker with wet hands.
Otherwise, there may be electric shock or physical injury. |
|  | Dust removal | ● The power plug shall be cleaned regularly to prevent dust accumulation.
Otherwise, there may be fire hazards or electric shock. |
|  | Water spraying prohibition | ● Never spray water on any electric parts.
Otherwise, there may be fire hazards or electric shock. |
|  | Operation prohibition | ● In case of a gas leak, do not switch on the cooker hood.
Otherwise, it may result in a gas explosion. |
|  | Attention to ventilation | ● The cooker hood shall be installed at a place with sufficient ventilation.
When using a natural exhaust type stove, poor ventilation may result in carbon monoxide poisoning. |
|  | Strict implementation | ● The air shall not be discharged into hot flues that are used for discharging fumes generated from burning gas or other fuels (not applicable to cooker hoods that can discharge the air back into the room). |

⚠ WARNING



Attention to adjustment

- **Always perform exhaust adjustments.**



Supervision requirement

- **The product is not intended for use by persons (including children) with reduced physical, sensory or mental capabilities, or lack of experience or knowledge, unless they are under the supervision or guidance of a specially assigned person who is responsible for their safety.**

Children require extra supervision. Do not let children play with the product.



Attention to ventilation

- **Ensure that there is sufficient ventilation in the room when using the cooker hood with multiple appliances burning gas or other fuels.**



Cleaning frequency

- **Cleaning that is not carried out in accordance to safety precautions may result in a fire hazard.**



BBQ prohibition

- **Never barbecue under the cooker hood.**

⚠ CAUTION



Caution during installation

- **Install the product in a stable location.**

Otherwise, the cooker hood may detach and cause injury or damage.



Disconnection of the plug by holding the power plug

- **When disconnecting the power, hold the power plug itself instead of the power cord.**

Otherwise, it may result in the damage of the power cord, as well as fire hazards or electric shock.



Disconnection of the plug

- **Be sure to disconnect the power plug from the outlet, or switch off the breaker when the cooker hood is idle for a long run.**

Otherwise, it may result in the deterioration of the insulation property, as well as fire hazards or electric shock.



Prohibition on use

- **Never use the product in a wet place such as bath room (Exhaust fans should be used in a bath room).**

Otherwise, it may result in fire hazards or machine failure.



Caution during assembly

- **Component parts removed while repairing shall be securely assembled.**

Otherwise, there may be injury or damage caused by detaching of the parts or cooker hood itself.



Caution during assembly

- **Ensure that electric wiring is laid out safely according to the related standard or regulations.**

Incorrect wiring may result in fire or electrical shock.



Contact prohibition

- **Never touch the filter or parts around it while cooking.**

Otherwise, it may result in the detachment of the filter or parts, and even burns or injury.



Contact prohibition

- **During operation, never insert fingers or other objects into the cooker hood.**

Otherwise, it may result in the machine failure or physical injury.



Operation prohibition

- **Switch off the cooker hood immediately if the pan catches fire.**

Otherwise, the cooker hood will fuel the fire and create a dangerous situation.



Caution during installation

- **The distance between the topmost part of cooking appliance and the lowest part of cooker hood, when it is located exactly over the cooking appliance, shall be 650mm to 850mm. If greater distance is specified in the cooking appliance manual, it must be taken into account.**

CAUTION



Prohibition
on object
placing

- **Never put anything on the cooker hood.**
Otherwise, it may result in fire hazards, machine failure or injury due to detachment.



Using gloves

- **Always wear gloves during maintenance.**
Otherwise, the user may be injured by sharp edges or corners.



Replacement
of damaged
power cord

- **If the power cord is damaged, request for a replacement from the manufacturer, its service agent or similarly qualified persons in order to avoid any hazards.**



Prohibition

- **Do not stare directly at the LED lights when they are turned on.**



Caution

- **Clean the oil tray when the oil level reaches one half of the height to prevent the oil from overflowing or dripping during removal.**



Caution
during
installation

- **In order to prevent the product from detaching, the plastic expansion pipes shall be used with the drill with corresponding specifications to ensure that the connection is as seamless as possible.**



Strict
implementation

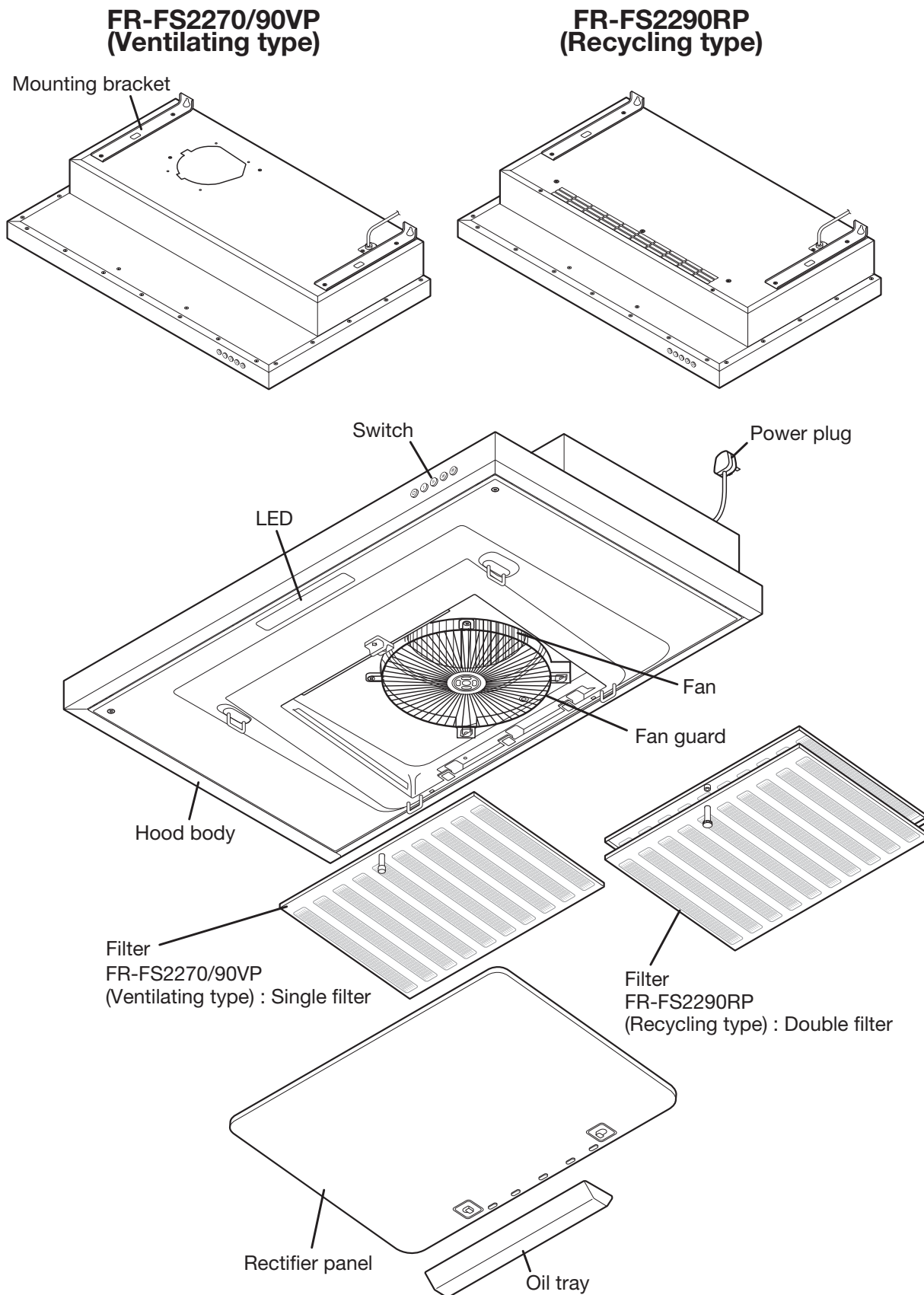
- **Ensure that the exhaust pipe is connected to an outdoor area. To avoid fire hazards and ensure the ventilation of fresh air, waste gas shall be discharged outdoors instead of walls, attics or garages.**

Precautions on use

- **Always turn on the cooker hood while cooking.**
Otherwise, the cooker hood may be damaged or fail to operate due to the increased temperature.
- **Never use a gas hob without any cooking equipment on it.**
Otherwise, the high temperature of the cooker hood body may result in machine failure.
- **Smoke capturing performance may be deteriorated by cross winds when the induction cooker is used. Additionally, dew may form on the surface of the cooker hood when it is used at low temperature.**
When this happens, first wipe off the cooker hood before using it.
- **Prevent direct wind from air conditioners.**
Otherwise, the smoke capturing performance may be reduced by direct wind from an air conditioner.
The cooker hood is easily affected in open areas, especially when the induction cooker is not generating any ascending air current.
- **Ensure that sufficient ventilation is maintained while operating the cooker hood.**
Ensure that there are adequate air intake slots on the wall opposite from the cooker hood, or that the door of the room is kept slightly open.
Otherwise, the smoke capturing performance may be reduced, or there may be abnormal noise, vibration.
- **Ensure that the distance between the water heater and the cooker hood is more than 500mm.**
As the area surrounding the water heater is at higher temperature, the cooker hood shall be at least 500mm away from the water heater.
Never install the cooker hood above the water heater. Otherwise, the cooker hood may become damaged or fail due to the increased temperature.
- **Never use the cooker hood with its rectifier panel removed.**
Otherwise, the smoke capturing performance may be reduced.
- **Inoperable cooker hoods shall be processed to ensure that it cannot be used before it is disposed.**

Preparation

Name of parts



■ List of included items

FR-FS2270/90VP (Ventilating type)






Name	Usage	Quantity
Main unit	—	1
Exhaust port	Connecting the main unit and the duct	1
Soft tape	Sealing the exhaust port and the duct	1
Washer-head wood screw (Ø5.1×25)	Mounting the main unit	6
Washer-head wood screw (Ø5.1×45)	Mounting the main unit	4
Fixing screw (M4×8)	Mounting the exhaust port	4
Oil tray	Collects filtered oil	1

FR-FS2290RP (Recycling type)

Name	Usage	Quantity
Main unit	—	1
Washer-head wood screw (Ø5.1×25)	Mounting the main unit	6
Washer-head wood screw (Ø5.1×45)	Mounting the main unit	4
Oil tray	Collects filtered oil	1

Switch



- | | | |
|---|--------|--|
|  | Button | Stop fan |
|  | Button | For light cooking (steaming, etc.) |
|  | Button | For medium cooking (light stir-fry of vegetable, etc.) |
|  | Button | For heavy cooking (deep fried fish, etc.) |
|  | Button | Turn ON/OFF the light |

■ Installation

Preparation and checking before installation

CAUTION

1. Install the cooker hood carefully and avoid any contact with any metal parts (the metal lattice in the wall or the like) of the building.
2. Never embed the body of the cooker hood in the wall. Otherwise, it may result in the electric leakage of the unit.
3. The air shall not be discharged into hot flues that are used for discharging fumes generated from burning gas or other fuels (Not applicable to cooker hoods that can discharge the air back into the room).
4. The distance between the topmost part of cooking appliance and the lowest part of cooker hood, when it is located exactly over the cooking appliance, shall be 650mm to 850mm. If greater distance is specified in the cooking appliance manual, it must be taken into account.
5. Use a gas hob with a width less than that of the cooker hood.
6. Avoid using the cooker hood with changes in specifications, for instance, with modified switches.
7. Never install the cooker hood in a wet area or in other wet rooms since it may result in electric shock or damage.
8. Never install the cooker hood at a place where the ambient temperature exceeds 40°C, otherwise it may result in machine failure.
9. To protect your hands from injury, please wear working gloves when installing the cooker hood.
10. If the power cord is damaged, it shall be replaced by the manufacturer or its service agent or a similarly qualified person to prevent any hazard.

Checking mounting surface strength

The mounting surface should have sufficient strength to support the cooker hood. The cooker hood shall be installed on a location that can support the weight of the cooker hood for an extended period of time.

[Product weight 15kg (FR-FS2270VP), 17kg (FR-FS2290VP), 18kg (FR-FS2290RP).]

■ In the case of boarded wall

- If the thickness is more than 20mm, mount the cooker hood directly to the wall.
- If the thickness is less than 20mm, embed a reinforcing board and mount the cooker hood to this board.

■ In the case of a concrete/tile faced wall

- Embed a reinforcing board in the wall in advance, or use a curl plug or the like.

Power plug

The cooker hood uses a 3-pin power plug.

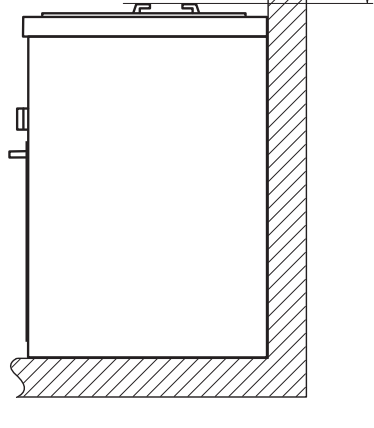
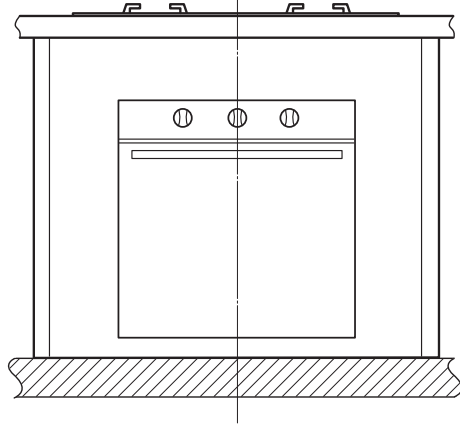
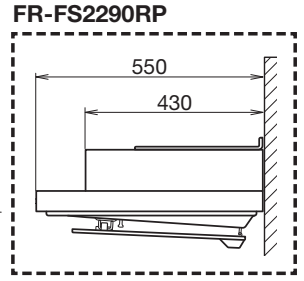
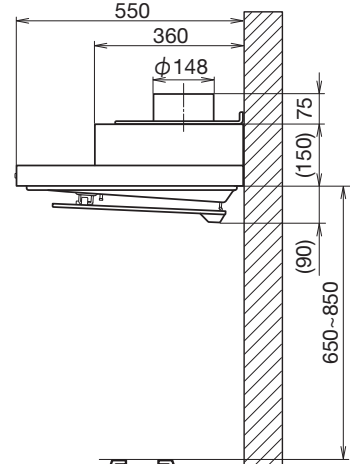
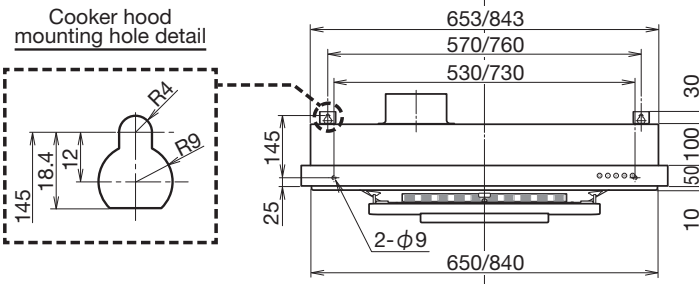
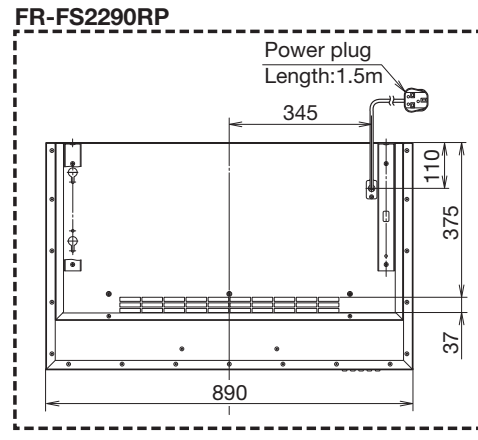
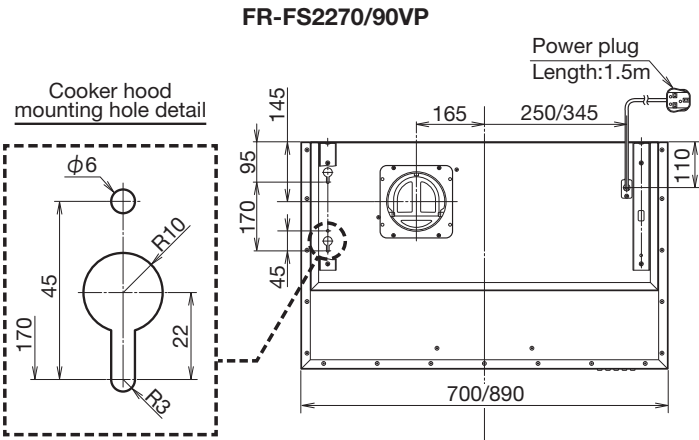
Be sure to use the wall outlet specified for the cooker hood.

Checking accessory parts

Take out the main unit and accessory parts from the packing box, and check if all accessories described in the packing list are available.

Confirmation of the installation location (Unit: mm)

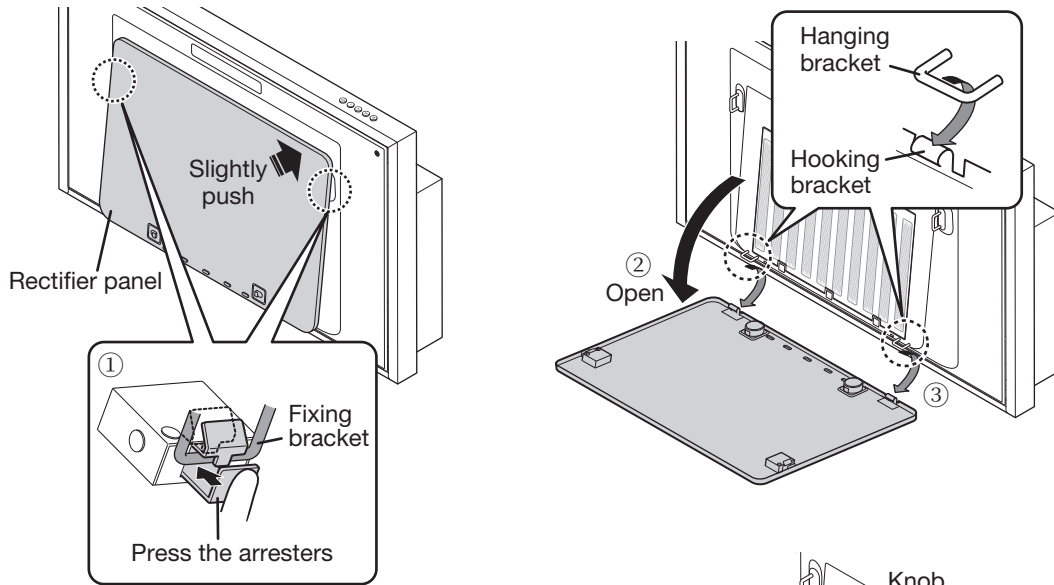
Installation



Preparation before installation

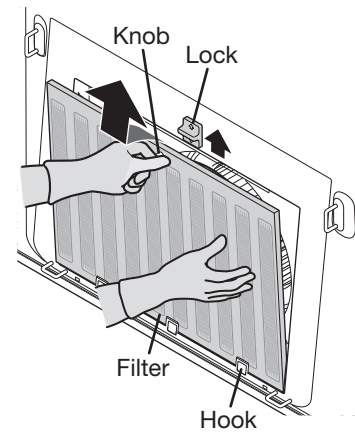
1 Removing rectifier panel

- 1) Support the rectifier panel with both hands and slightly push it forward. Press the left and right arresters of the rectifier panel for detaching (①).
 - 2) Support the rectifier panel with both hands to slowly detach it (②).
 - 3) Uphold the rear end of the rectifier panel at the position shown in the right figure to detach it from the hanging bracket of the cooker hood (③).
- * Be sure to detach both points at the same time. Otherwise, the metal parts may deform.



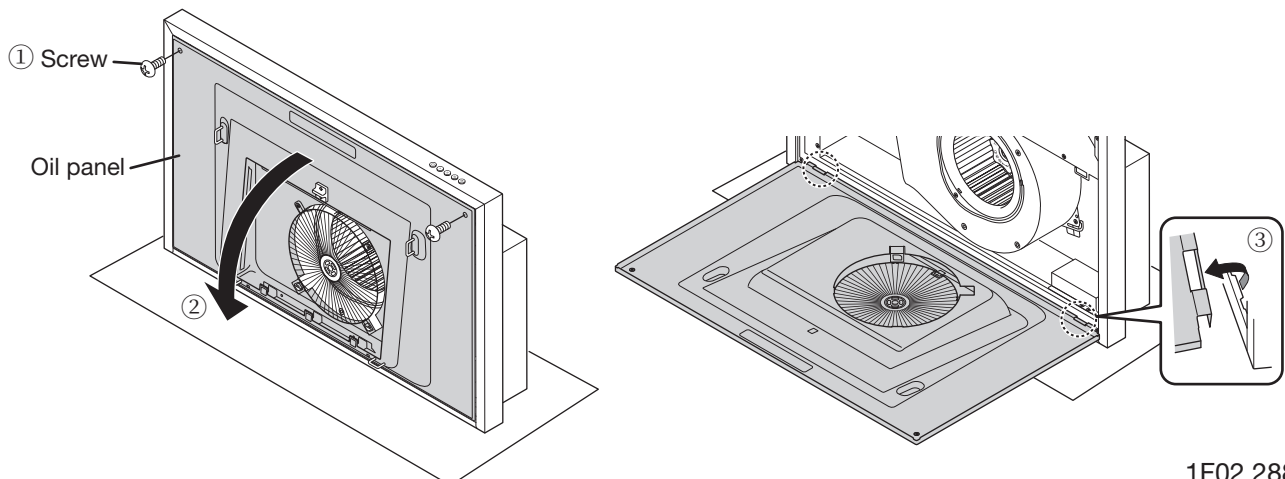
2 Removing filter

- Slide the lock upwards while holding the filter knob to remove it. Lift out the filter moving it upwards while supporting it with your hand so that it does not fall, then detach it from the three hooks at the bottom of the main unit.



3 Removing oil panel

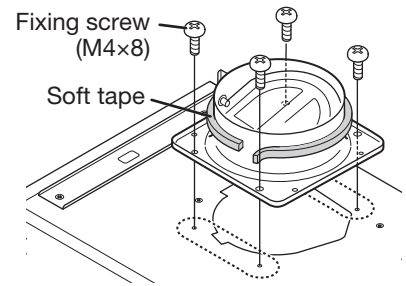
- 1) Loosen the two screws securing the oil panel to the hood body (①).
- 2) Supports the oil panel with both hands to slowly detach it (②).
- 3) Uphold the rear end of the oil panel at the position shown in the right figure below to detach it from the hood body (③).



4 Fixing the exhaust port (FR-FS2270/90VP only)

Firmly fix the supplied exhaust port by fastening the supplied fixing screws (M4×8).

Then attach the supplied soft tape around the supplied exhaust port.



Note

When attaching the exhaust port, pay attention to its shutter opening direction. If it's installed incorrectly, it may cause bad discharge, abnormal noise, etc.

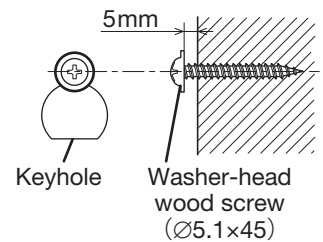


Cooker hood installation

Wall-mounted installation

1 Screw in washer-head wood screws on the wall

Referring to “Confirmation of the installation location” on page 8, insert the supplied washer-head wood screws (Ø5.1×45) into the mounting wall for the left and right keyholes of the mounting bracket. Allow about 5mm space between the wall and screwheads for hanging the cooker hood.

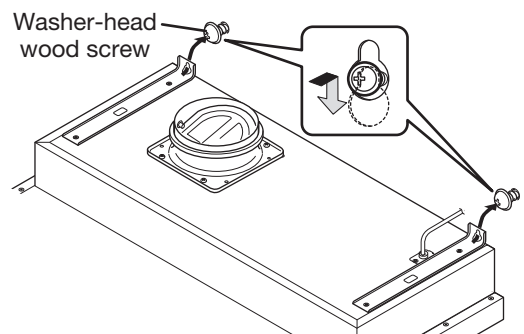


Note

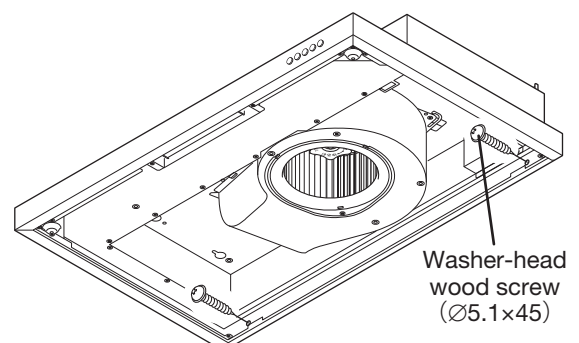
In case reinforcement is required, arrange it through the installation service provider.

2 Mount the cooker hood

1) Hook the keyholes of the cooker hood on the supplied washer-head wood screws, and tighten the screws.



2) Fasten the 2 supplied washer-head wood screws (Ø5.1×45) on the rear of the cooker hood securely.



3 Connection of duct and exhaust port (FR-FS2270/90VP only)

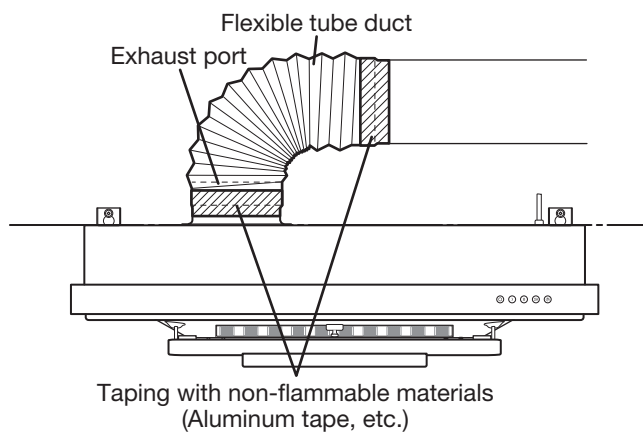
Connect $\varnothing 150$ flexible tube duct or the like with the supplied exhaust port.

Make the supplied exhaust port secure and airtight using non-flammable tape such as aluminium tape, etc. (not supplied)

Note

The longer the exhaust duct, the lower the ventilation.

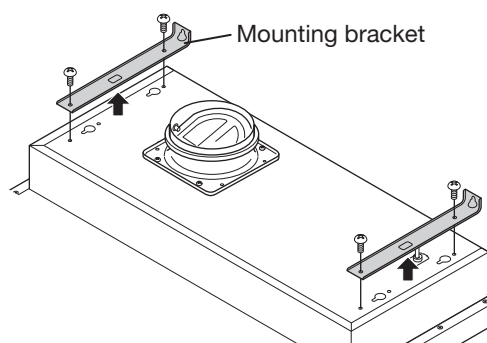
After completing this process, proceed to "Reattaching the removed parts" on page 13.



Upper side-mounted Installation

1 Detach mounting brackets from the cooker hood

Detach the two mounting brackets attached on the upper side of the cooker hood.

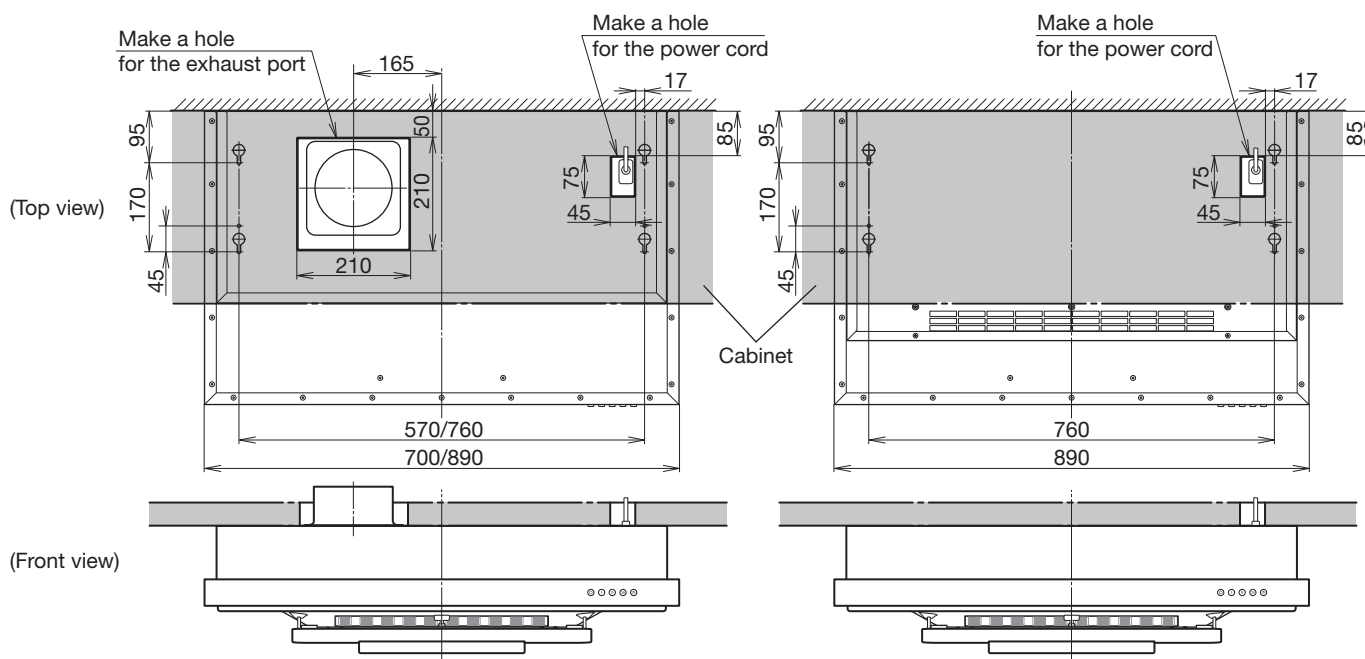


2 Make holes on mounting surface (cabinet)

Referring to the diagrams below, make holes on the mounting surface (cabinet) for the power cord and the exhaust port (FR-FS2270/90VP only).

FR-FS2270/90VP

FR-FS2290RP

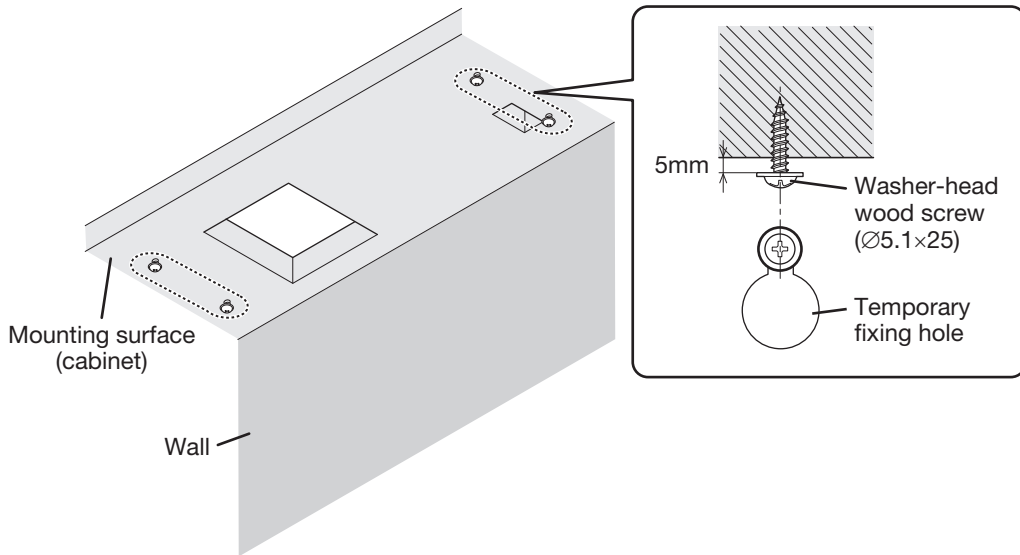


3 Screw in washer-head wood screws on the mounting surface

Referring to “Confirmation of the installation location” on page 8, fasten the supplied washer-head wood screws ($\varnothing 5.1 \times 25$) into the mounting surface through the keyholes of the upper side of the main unit. Allow about 5mm space between the wall and screwheads for hanging the cooker hood.

Note

Incase reinforcement is required, arrange it through the installation service provider.



4 Install cooker hood on mounting surface (cabinet)

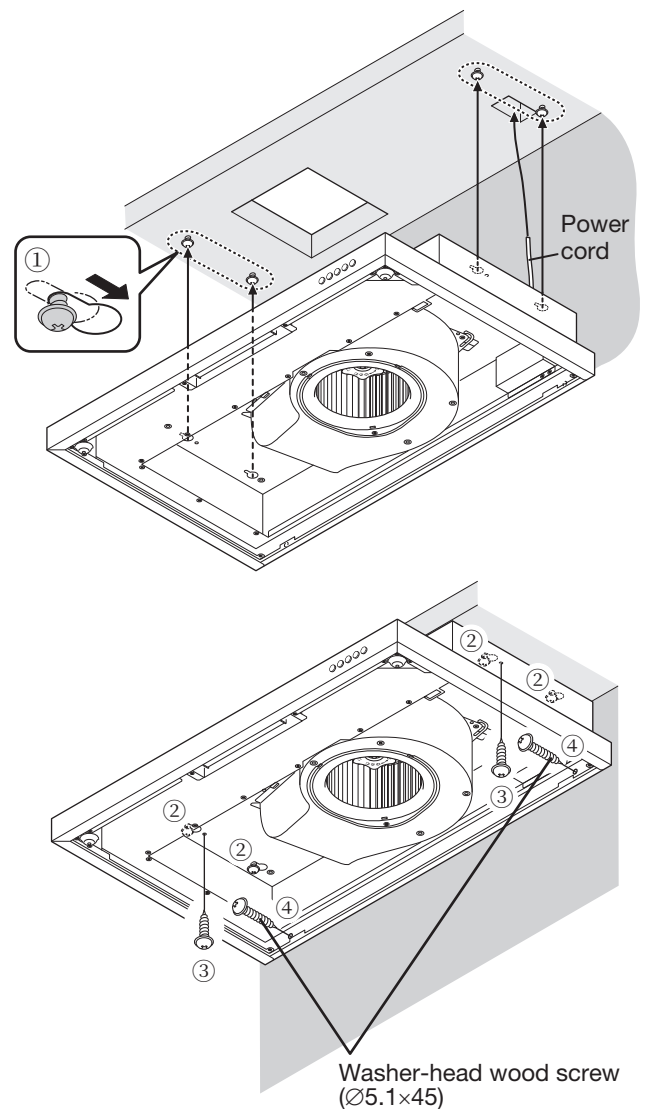
1) Slot the temporary fixing hole on the upper side of the cooker hood into the screw fitted as shown on the right and slide the temporary fixing holes towards the rear end (①).

* Hold the cooker hood firmly to ensure that the cooker hood does not fall during the process.

2) Fully tighten the 4 supplied washer-head wood screws ($\varnothing 5.1 \times 25$) in the temporary fixing holes (②).

3) Screw in the 2 supplied washer-head wood screws ($\varnothing 5.1 \times 25$) provided into the 2 round holes on the upper side of the cooker hood at the position shown in the right figure (③).

4) Screw in the 2 supplied washer-head wood screws ($\varnothing 5.1 \times 45$) provided into the holes on the rear side of the main unit at the position shown in the right figure (④).



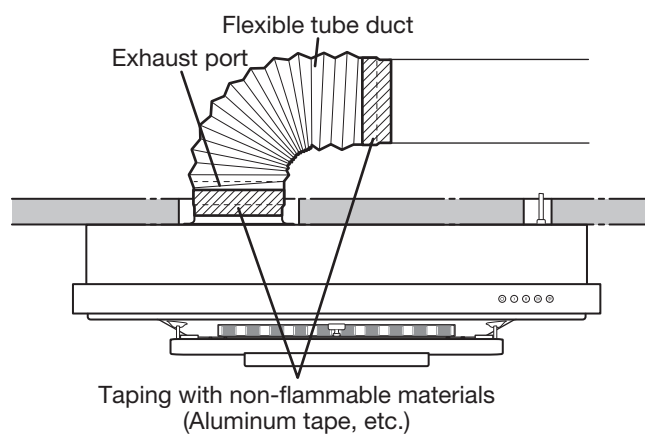
5 Connection of duct and exhaust port (FR-FS2270/90VP only)

Connect $\varnothing 150$ flexible tube duct or the like with the supplied exhaust port.

Make the supplied exhaust port secure and airtight using non-flammable tape such as aluminium tape, etc. (not supplied)

Note

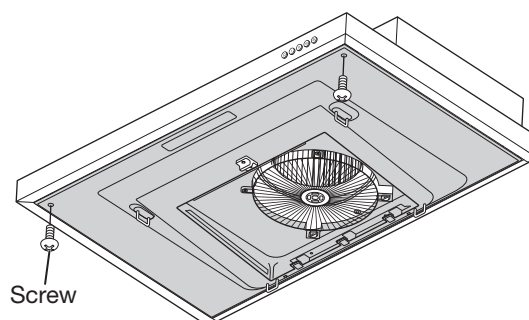
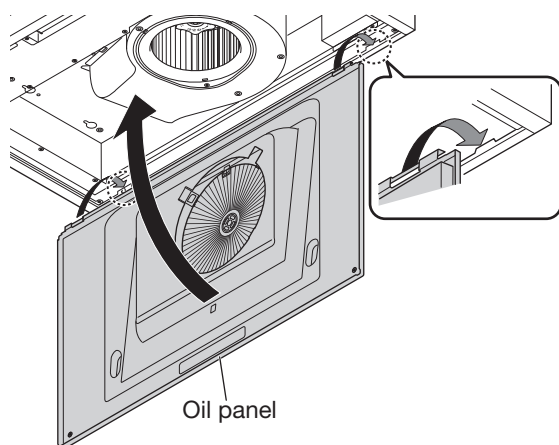
The longer the exhaust duct, the lower the ventilation.



Reattaching the removed parts

1 Attaching oil panel

Hook the rear of the oil panel on the catches, then raise its front. With holding the oil panel, fix it using 2 screws.

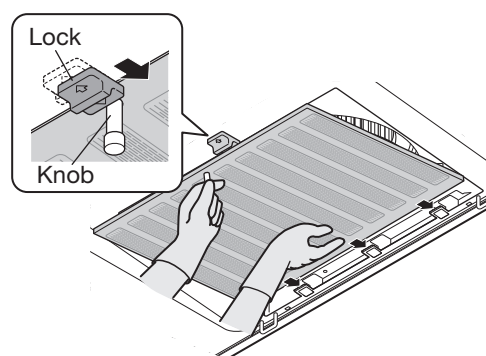


2 Attaching filter

Hold the filter on its knob and carefully fit the other end on the hooks of the hood body, then push it onto the main unit. Slide the lock backwards to affix the filter in place.

Note

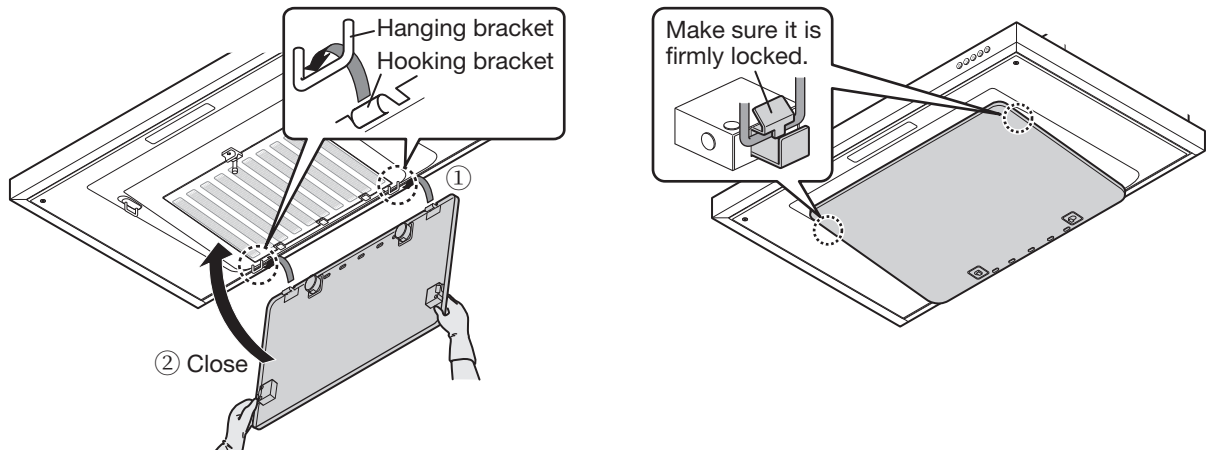
Be sure to hold the filter with hand when attaching it. Otherwise, it may drop and result in injury.



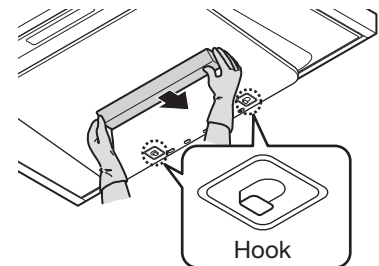
- ### 3 Attaching rectifier panel
- 1) Securely hang the left and right hooking bracket at the rear of the rectifier panel on the hanging bracket (①) of the cooker hood.
 - 2) Support the rectifier panel with both hands and lift the front end upwards until a “snap” sound is heard, and it is secure (②).
- After installing, pull the rectifier panel up and down to make sure it will not drop.

Note

In order to prevent fasteners falling due to insufficient locking, please make sure that the rectifier panel is locked securely.



- ### 4 Attaching oil tray
- Install the supplied oil tray on the rectifier panel. Align the 2 projections of the supplied oil tray with the installation hooks of the rectifier panel. Insert the projections, slide the tray backwards and secure it.



Operation checking

Turn off the circuit breaker on the distribution board, and then plug the power plug into the outlet. After turning on the circuit breaker, switch on the hood to check the operation. Refer to page 6 for instructions on switch operation and operation state confirmation.

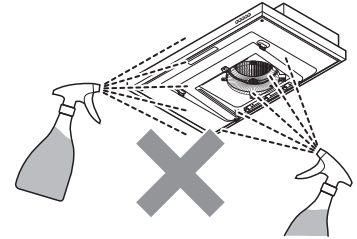
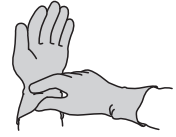
- Check if the fan rotates normally at all speeds during operation.
- Check that there are no abnormal noise or vibration.

Maintenance

Clean the cooker hood frequently as it will become greasy (especially, clean the filter at least once a month. For a family, cooking at least twice a day, clean the filter once in every two weeks). If the cooker hood is left unattended for a long time, a large amount of oil will accumulate and become hardened grease, which is difficult to remove. Always clean the oil tray, external body and the rectifier panel in a timely manner (cleaning frequency: about once a month).

Precautions for maintenance

- Before cleaning the cooker hood, be sure to disconnect the power plug from the socket, or turn off the breaker.
- For safety, always wear a pair of rubber gloves while cleaning the filter and other parts.
- Especially, ensure that no water is splashed on electric parts such as motor, switches, connectors or the like. Do not spray any type of detergent to the electric parts. Otherwise, it may cause machine failure.
- Do not apply solvents such as thinner, benzene, polishing powder or the like for cleaning painted surfaces, oil panel and others, since it will tarnish or scratch them.
- Do not wash parts with a hard brush or the like for cleaning, otherwise, parts will be damaged.
- The cooker hood may catch fire if it is not cleaned according to the Manual.



Detaching/Attaching of parts to be cleaned

Install all parts using the opposite procedure as that for removing the parts.

Oil Tray

■ Detaching

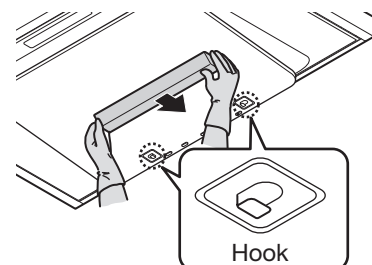
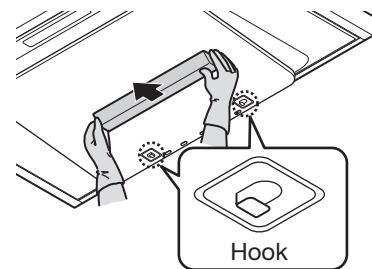
Remove the oil tray by pulling the 2 projections out of the rectifier panel hook. While removing, make sure oil on the oil tray does not overflow or gets spilled.

Note

Oil may not accumulate in the short period of time depending on usage frequency, which is normal.

■ Attaching

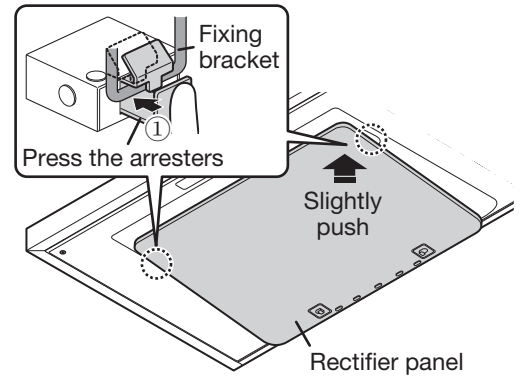
Install the oil tray on the rectifier panel. Align the 2 projections of the oil tray to the installation hooks of the rectifier panel. Insert the projections, slide the tray backward and secure it.



Rectifier Panel

■ Detaching

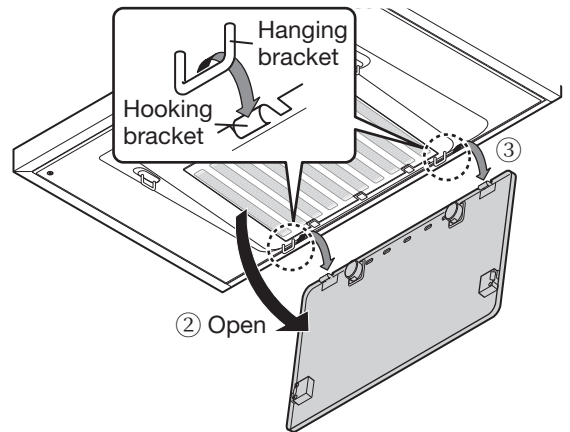
1) Support the rectifier panel with both hands and slightly push it upwards. Press the left and right arresters of the rectifier panel for detaching (①).



2) Support open the rectifier panel with both hands to slowly detach it (②).

3) Uphold the rear end of the rectifier panel at the position shown in the lower right figure to detach it from the hanging bracket of the cooker hood (③).

* Be sure to detach both points at the same time. Otherwise, the metal parts may deform.

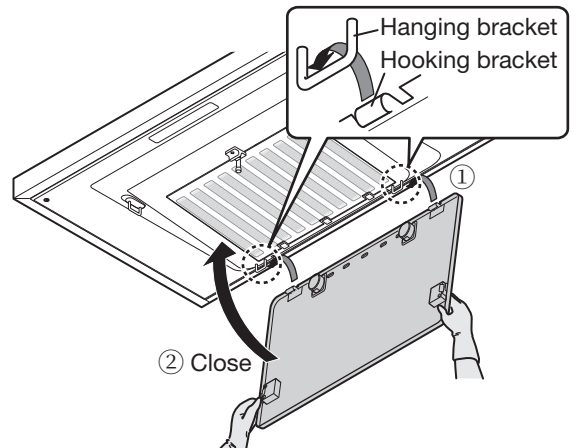


■ Attaching

1) Securely hang the left and right hooking bracket at the rear of the rectifier panel on the hanging bracket (①) of the cooker hood.

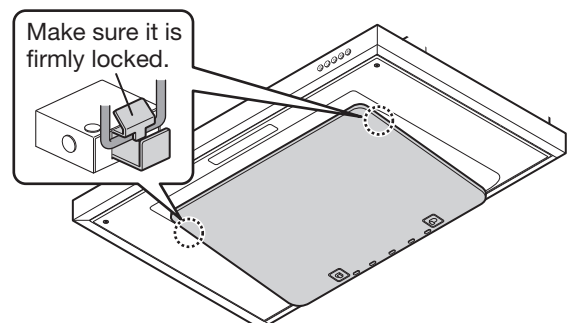
2) Support the rectifier panel with both hands and lift the front end upwards until a “snap” sound is heard, and it is secure (②).

After installing, pull the rectifier panel up and down to confirm the stability.



Note

In order to prevent fasteners falling due to insufficient locking, please make sure that the rectifier panel is locked securely.



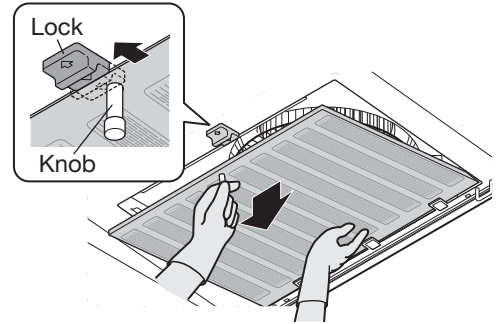
Filter

■ Detaching

Slide the lock forward while holding the filter knob to remove it. Pull out the filter moving it forward while supporting it with your hand so that it does not fall, then detach it from the three hooks at the bottom of the main unit.

Note

Be sure to hold the filter with hand when removing it. Otherwise, it may drop and result in injury.

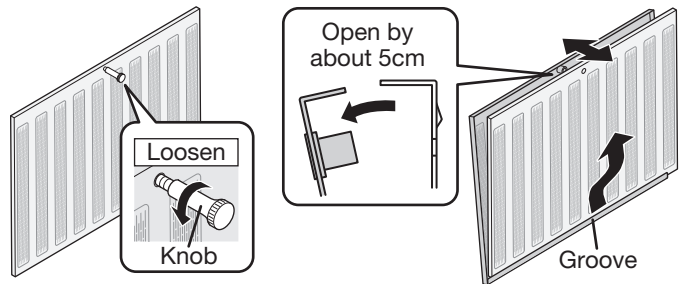


Disassembly/Assembly of filter

FR-FS2290RP (Recycling type) : Double filter only

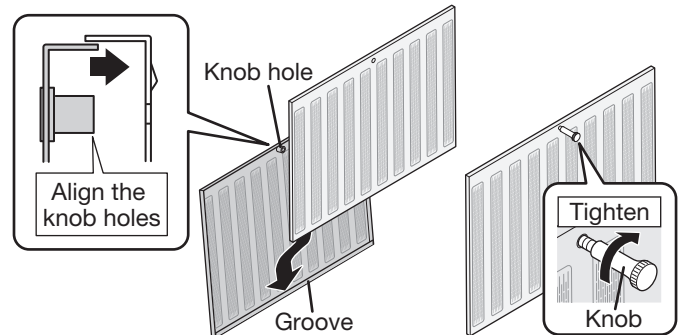
[Disassembly]

- 1) Remove the knob by turning it in the direction of loosen.
- * Ensure that the removed knob does not get misplaced.
- 2) Open the upper side (where screw holes are located) by about 5cm and detach the filter by pulling it out from the groove at the bottom.



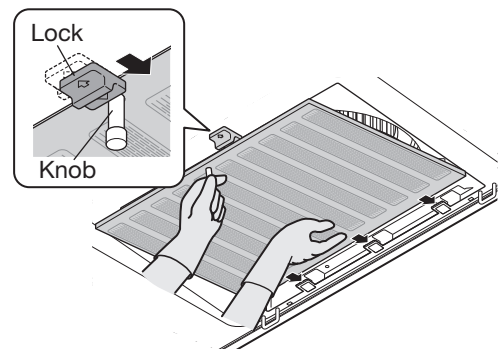
[Assembly]

- 1) Install the filters into the groove in such a way that the knob holes of both filters align exactly at the same place.
- 2) Attach the knob by turning it in the direction of tighten and fix it firmly.



■ Attaching

Insert the main unit hooks into the rear side of the filter, then push the front side of the filter onto the main unit. Slide the lock backwards to affix the filter in place.



Cleaning

Hood body

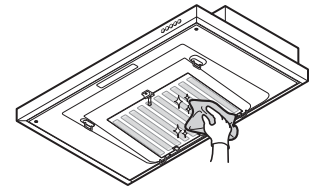
When cleaning, use a neutral detergent and soft cloth.

Do not use an organic solvent. After cleaning, wipe the hood well with a wet cloth dipped in water to remove any remaining detergent, and finally thoroughly wipe any moisture off using a dry cloth.

Oil tray/Rectifier panel/Filter

When cleaning, use a neutral detergent and soft cloth.

Do not use an organic solvent. After cleaning, wash off with water to remove all remaining detergent, and finally thoroughly wipe any moisture off using a dry cloth.

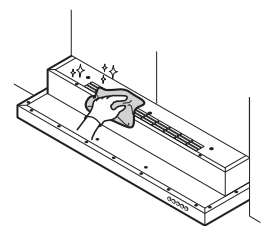


Note

When cleaning the rectifier panel, perform it on a flat surface to avoid any sorts of deformation.

Exhaust outlet/Cabinet (FR-FS2290RP only)

Oil will exhaust at exhaust outlet if rectifier panel and filter are not cleaned and washed regularly. If oil is seen at the exhaust outlet or cabinet, wipe off the oil with soft cloth soaked in neutral detergent. Do not use an organic solvent. After cleaning, wipe the exhaust outlet or cabinet with a wet cloth dipped in water to remove detergent and finally thoroughly wipe any moisture off using a dry cloth.



Fan

As for cleaning of the fan, please consult Fujioh/Agent.

Other Information

Specifications

FR-FS2270/90VP (Ventilating type)

Rated Voltage (V)	Speed	Frequency (Hz)	Power Consumption (W)	Air Flow (m ³ /h)	Sound (dB)
220	Hi	50	105	545	50
	Med		75	420	45
	Low		55	330	39
230	Hi	50	110	555	51
	Med		80	440	46
	Low		60	350	40
240	Hi	50	115	565	52
	Med		85	460	47
	Low		65	370	41

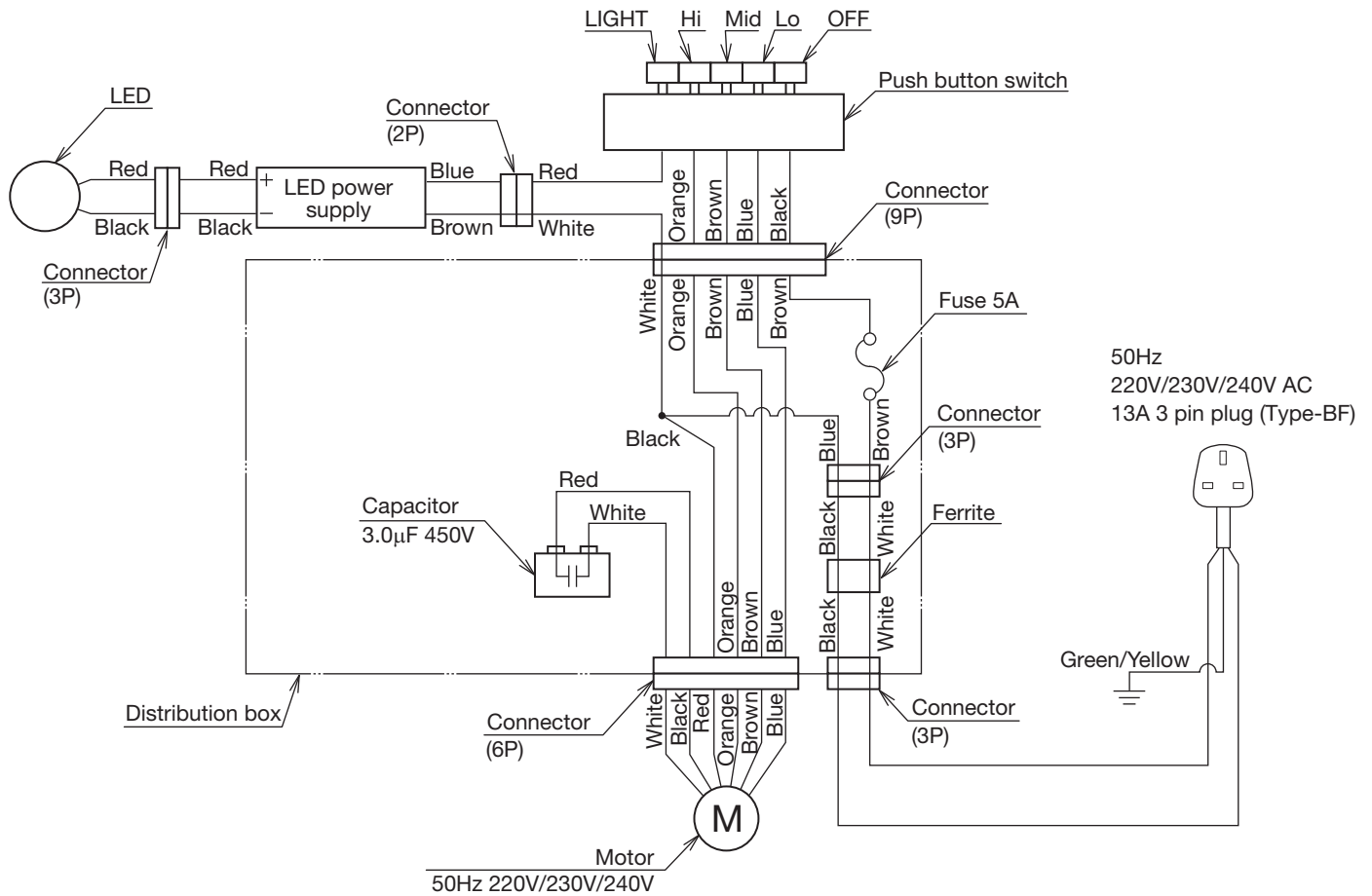
* with 3.5 watts for lamp

FR-FS2290RP (Recycling type)

Rated Voltage (V)	Speed	Frequency (Hz)	Power Consumption (W)	Air Flow (m ³ /h)	Sound (dB)
220	Hi	50	90	395	53
	Med		65	340	49
	Low		50	285	45
230	Hi	50	95	400	53
	Med		70	350	50
	Low		55	300	46
240	Hi	50	100	405	53
	Med		75	360	51
	Low		60	310	47

* with 3.5 watts for lamp

Circuit diagram



Other Information

Service and warranty

When requesting after-sales service:

- If any abnormality occurs while the cooker hood is in operation, switch the cooker hood off and check the following:

- (1) Whether the fuse in the breaker has been burnt out?
- (2) Whether the power plug is not in proper contact with the socket?

If none of the above causes are the problem, disconnect the power plug from the socket and consult the shop from which you have purchased your cooker hood.

When consulting the shop, inform the shop the type/model of cooker hood and the date of purchase.

5
years

- The minimum warranty period of performance parts for repairing the cooker hood is 5 years after termination of manufacturing of the cooker hood.

The performance parts refer to those parts for required to maintain the functions of a cooker hood. However, the warranty period of the same kinds of interchangeable parts can be prolonged to another 4 years.

Under the premise of not affecting the normal use, we are willing to repair these parts according to your instructions.

- The parts used on the cooker hood are subject to change without prior notice owing to improvement of performance.

Global Website
www.fujioh.com

FUJIOH INTERNATIONAL TRADING PTE. LTD.

Southeast Asia Regional Headquarters

3014A Ubi Road 1 #06-04, Singapore 408703

Tel : (65) 6286 3286 Fax : (65) 6285 3285

E-mail : fit@fujioh.com.sg

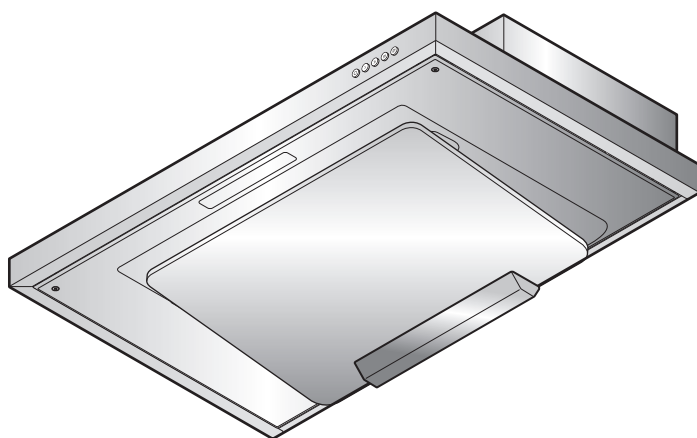
-FUJIOH-

吸油煙機

MADE IN
JAPAN
日本製

FR-FS2270/90VP (排氣型)
FR-FS2290RP (循環型)

使用說明書



目 錄

安全注意事項	42~44	維修保養	54~58
使用須知	44	維修保養注意事項	55
準備	45, 46	拆卸 / 安裝需要清洗的零部件... ..	55~57
零部件名稱	45	清潔	58
操作按鍵	46	其他資訊	58, 59
安裝	47~54	規格	58
安裝前的準備和檢查	47, 48	電路圖	59
安裝前的準備工作	49, 50	維修與保固	59
吸油煙機的安裝	50~53		
將卸下的零部件重新組裝起來... ..	53, 54		
運行檢查	54		

致各零售店及安裝單位：
在安裝施工結束後，務必請將本
使用說明書呈交顧客。

感謝購買本公司吸油煙機。
安裝／操作吸油煙機之前，請詳閱此說明書。
閱讀後，請妥善保管此說明書。

1F02 2881



安全注意事項

- 安裝和操作前，請閱讀以下安全注意事項，以便正確、安全地使用吸油煙機。
- 這些安全注意事項旨在確保您能正確使用本產品，以防對自己或他人造成危險或傷害。根據危險性和損害程度，安全注意事項分為「警告」和「注意」兩個等級。因這些注意事項對於安全至關重要，因此務必加以注意並嚴格予以遵守。



警告

如未遵守，有可能造成嚴重傷害。



注意

如未遵守，有可能造成人身傷害或物品損害。

警告



四口爐灶以下

- 本吸油煙機設計為可安裝在至多四個爐口或四口爐灶之上。



禁止拆卸、進行維修或改裝

- 切勿試圖拆卸、進行維修或改裝。應請專業的技術人員進行操作。否則，可能造成火災、觸電或異常情況。



禁止使用

- 嚴禁在交流電壓超過 220V/230V/240V 的地區使用。否則可能造成火災或觸電。



組裝注意事項

- 必須由專業技術人員進行電力佈線。佈線不當可能會造成漏電或火災危險。



安裝注意事項

- 應至少由 2 人進行安裝作業。吸油煙機的重量約為 15kg (FR-FS2270VP)、17kg (FR-FS2290VP)、18kg (FR-FS2290RP)。



安裝注意事項

- 為了確保與主電源全極斷開，應該在固定佈線中設定斷路器。



拔下電源插頭

- 維修保養時，務必從插座上拔下電源插頭，或關閉斷路器。此外，請勿用濕手接觸電源插頭或斷路器。否則可能會導致觸電或人身傷害。



除塵

- 應定期清潔電源插頭，以免積塵。否則可能會造成火災或觸電。



嚴禁噴水

- 嚴禁向任何電氣零部件噴水。否則可能會造成火災或觸電。



嚴禁進行操作

- 發生煤氣洩露時，嚴禁打開吸油煙機。否則可能會導致煤氣爆炸。



注意通風

- 吸油煙機應安裝在通風良好的位置。使用自然排氣式爐具時，通風不良會導致一氧化碳中毒。



嚴格執行

- 熱煙道用於將燃燒燃氣或其他燃料產生的煙氣排出室外，因此不得將吸油煙機產生的空氣排入熱煙道中（本條規定不適用於可將空氣排放回室內的吸油煙機）。

警告



注意調整

- 隨時調整排氣。



監督要求

- 體質虛弱者、感官能力不足或精神狀況較差者（包括兒童）或缺乏經驗或知識的人員，不適宜使用本產品，除非有專人負責其安全並為其提供與本產品使用相關的監督或指導。應對兒童嚴加看管，切勿讓其玩弄本產品。



注意通風

- 吸油煙機與多個燃燒燃氣或其他燃料的器具一起使用時，請確保室內通風良好。



經常清潔

- 如果未按說明進行清潔，可能會引發火災。



嚴禁燒烤

- 禁止在吸油煙機下方進行燒烤。

注意



安裝注意事項

- 請將本產品安裝在堅固的位置。
否則，吸油煙機可能掉落，並造成人身傷害或物品損害。



捏住電源插頭端部，拔掉插頭

- 斷開電源時，應捏住電源插頭，切勿拉扯電線。
否則可能會損壞電線，並引發火災或觸電。



拔掉插頭

- 長時間不使用吸油煙機時，務必從插座上拔下電源插頭，或斷開斷路器。
否則可能會導致絕緣性能受損，並引起火災或觸電。



禁止使用

- 切勿在浴室等潮濕場所使用本產品（應在浴室使用排氣扇）
否則可能會造成火災或設備故障。



組裝注意事項

- 應將維修時拆下的零部件牢固地組裝好。
否則，可能會發生零部件脫落或吸油煙機本身掉落，進而導致人身傷害或物品損害。



組裝注意事項

- 必須根據有關標準或規定安全佈線。
佈線不當可能導致火災或觸電。



禁止觸摸

- 切勿在烹飪過程中觸摸濾網或周圍零部件。
否則可能會導致濾網或零部件脫落，甚至導致燙傷或受傷。



禁止觸摸

- 吸油煙機運轉時，切勿將手指或其他物品插入其中。
否則可能導致機器故障或人身傷害。



禁止操作

- 鍋具著火時應立即關閉吸油煙機。
否則吸油煙機會助長火勢，造成危險。



安裝注意事項

- 當吸油煙機正好位於爐具上方時，爐具的上邊緣與吸油煙機下邊緣之間的距離應為650mm~850mm。如果爐具使用說明書規定更大間距，則必須加以考慮。

⚠ 注意



禁止放置
物品

- 請勿在吸油煙機上放置任何物品。
否則可能導致火災、機器故障或因物品掉落導致受傷。



戴工作手套

- 維修保養時務必戴上工作手套。
否則可能會被尖銳邊角劃傷。



更換受損
電線

- 如果電線受損，必須由製造商、服務代理機構或擁有同等資格的人員予以更換，以免造成危險。



禁止

- LED 燈亮著時，請勿直視。



注意

- 當油杯內油量達到一半時，請及時清理，以防止油溢出或移除油杯時油杯內有油滴落。



安裝注意
事項

- 為防止本產品掉落，使用塑膠膨脹管時，請配用相應規格的鑽頭，以確保無縫貼合。



嚴格執行

- 確保將排氣管接到室外。為避免發生火災並保持清新空氣的流通，請將廢氣排到室外。
請勿將其排放到牆體、閣樓或車庫中。

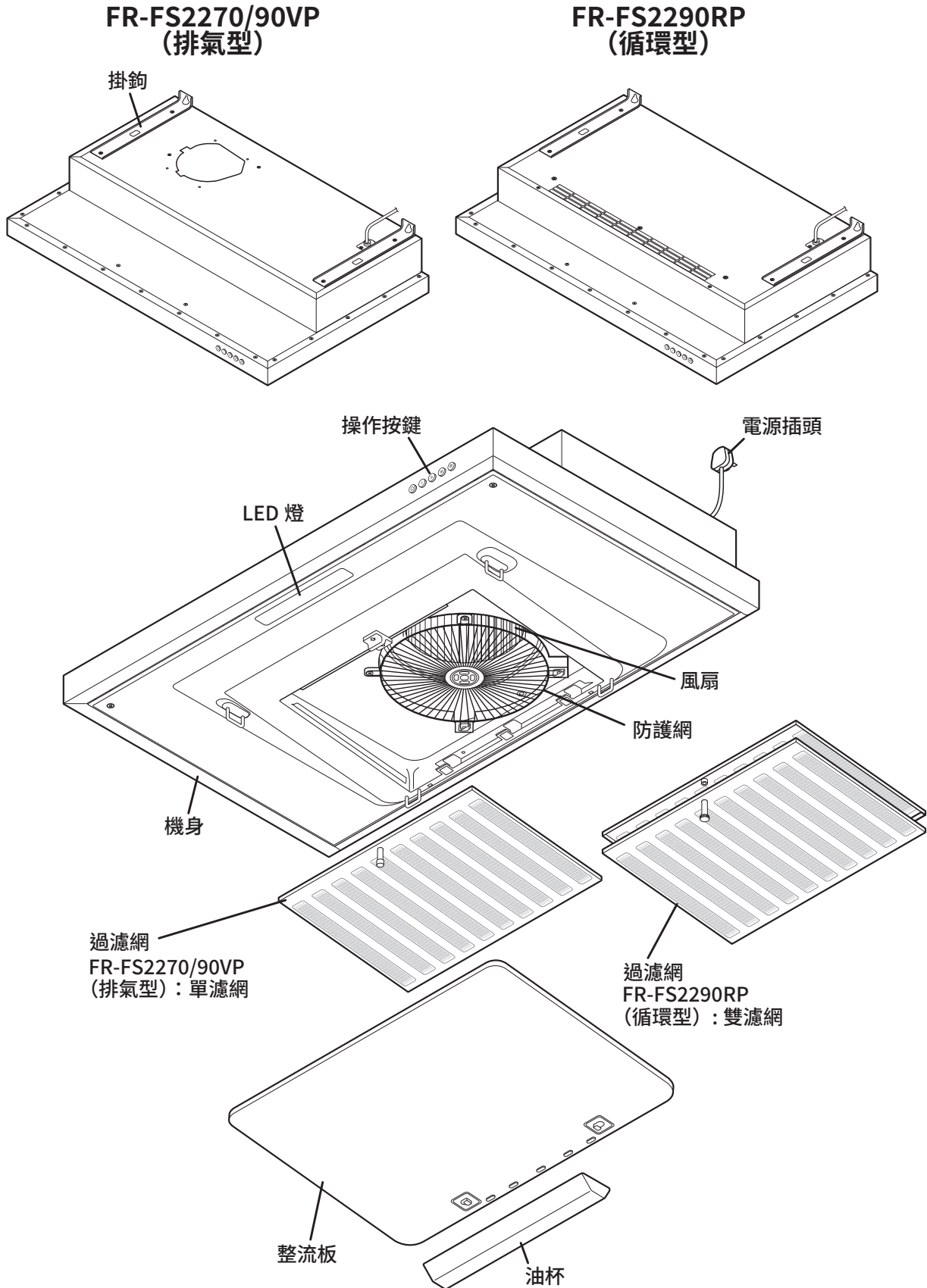
安全注意事項

使用須知

- 烹飪時，請打開吸油煙機。
否則，吸油煙機可能會因溫度升高而損壞或發生故障。
- 切勿在未放置任何炊具的情況下使用燃氣爐。
否則，吸煙機可能會因機身溫度過高而發生故障。
- 使用電磁爐時，吸油煙機的吸油煙性能可能會因側風的影響而降低。
此外，如果在低溫環境使用吸油煙機，其表面可能會結露。
此時，應先將吸油煙機擦拭乾淨，然後再予使用。
- 避免空調直吹。
否則，空調直吹可能會導致吸油煙性能下降。
在開放式空間中，尤其是電磁爐不產生上升氣流時，吸油煙機性能很容易受到影響。
- 吸油煙機運行過程中，應確保良好的通風環境。
吸油煙機對面牆體上應預留足夠的進風口，或將廚房門適當打開。
否則，吸油煙性能可能會下降，或可能產生異常噪音、振動。
- 確保熱水器與吸油煙機之間至少間隔 500mm。
由於熱水器周圍的溫度較高，因此應與吸油煙機保持 500mm 以上的距離。
切勿將吸油煙機安裝在熱水器的上方。否則，吸油煙機可能會因溫度升高而損壞或發生故障。
- 切勿在整流板拆下的情況下使用吸油煙機。
否則，吸油煙性能可能會下降。
- 處理廢舊吸油煙機時，將其處理到他人無法繼續使用的狀態後再廢棄。

準備

零部件名稱



■ 裝箱清單

FR-FS2270/90VP (排氣型)

名稱	用途	數量
主機	—	1
排氣口	連接主機和排氣管	1
軟密封帶	密封排氣口和排氣管	1
墊圈木螺絲 (Ø5.1×25)	安裝主機	6
墊圈木螺絲 (Ø5.1×45)	安裝主機	4
固定螺絲 (M4×8)	安裝排氣口	4
油杯	收集使用過後的油	1

FR-FS2290RP (循環型)

名稱	用途	數量
主機	—	1
墊圈木螺絲 (Ø5.1×25)	安裝主機	6
墊圈木螺絲 (Ø5.1×45)	安裝主機	4
油杯	收集使用過後的油	1

操作按鍵



- | | |
|-------|----------------|
| ○ 按鈕 | 關閉風扇 |
| 〉 按鈕 | 用於輕油烹飪 (蒸煮等) |
| » 按鈕 | 用於中油烹飪 (清炒蔬菜等) |
| »» 按鈕 | 用於重油烹飪 (炸魚等) |
| ☀ 按鈕 | 開關燈 |

■ 安裝

安裝前的準備和檢查

⚠ 注意

1. 安裝吸油煙機時應小心謹慎，避免接觸建築物的任何金屬零部件（牆壁上的金屬網等）。
2. 切勿將吸油煙機機身嵌入牆內。否則，可能會導致主機漏電。
3. 熱煙道用於將燃燒氣體或其他燃料產生的煙氣排出室外，因此不得將吸油煙機產生的空氣排入熱煙道中（本條規定不適用於可將空氣排放回室內的吸油煙機）。
4. 當吸油煙機正好位於爐具上方時，爐具的上邊緣與吸油煙機下邊緣之間的距離應為 650mm~850mm。如果爐具使用說明書規定更大間距，則必須加以考慮。
5. 使用寬度小於吸油煙機寬度的燃氣爐。
6. 避免使用規格被更改的吸油煙機，例如操作按鍵被改裝。
7. 切勿將吸油煙機安裝在潮濕區域或其他潮濕房間，否則可能會導致觸電或損壞。
8. 切勿將吸油煙機安裝在環境溫度超過 40°C 的位置，否則可能會導致機器故障。
9. 為防止傷手，安裝吸油煙機時請戴上工作手套。
10. 如果電線受損，應由製造商或其服務代理機構或擁有同等資格的人員進行更換，以防發生任何危險。

檢查安裝面的強度

安裝面應具有足夠的強度來支撐吸油煙機。應將吸油煙機安裝在能夠牢固持久地支撐吸油煙機重量的位置。

【產品重量 15kg (FR-FS2270VP)、17kg (FR-FS2290VP)、18kg (FR-FS2290RP)】

■ 安裝在板牆上

- 如果板牆厚度超過 20mm，則可直接將吸油煙機安裝到牆上。
- 如果板牆厚度小於 20mm，則應埋入增強板，再將吸油煙機安裝到此板上。

■ 安裝在混凝土 / 瓷磚牆上

- 在牆內預埋增強板，或使用塑料膨脹管或類似零部件。

電源插頭

該吸油煙機使用三芯電源插頭。

務必使用吸油煙機專用的牆壁插座。

檢查附件

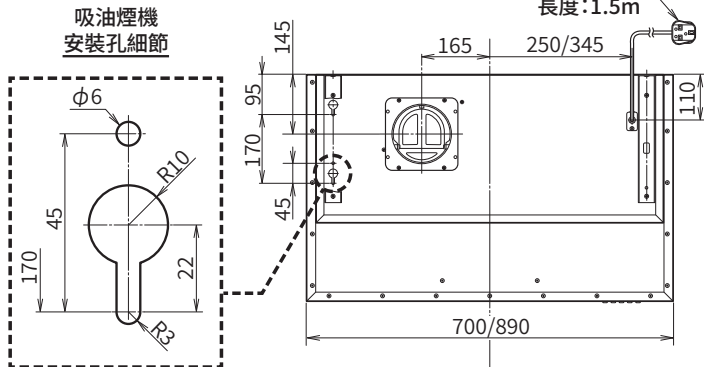
從包裝箱中取出主機和附件，並檢查裝箱清單上的附件是否齊全。

確認安裝位置 (單位: mm)

安裝

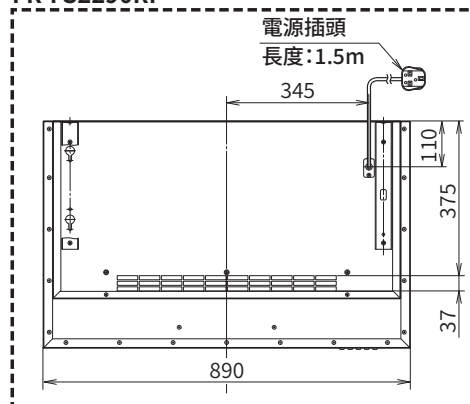
FR-FS2270/90VP

電源插頭
長度: 1.5m

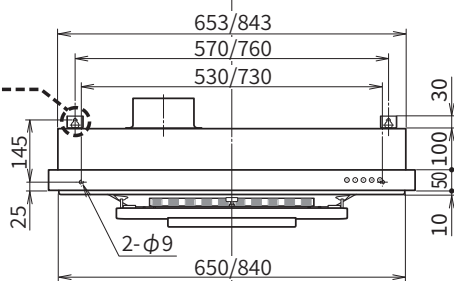
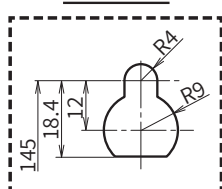


FR-FS2290RP

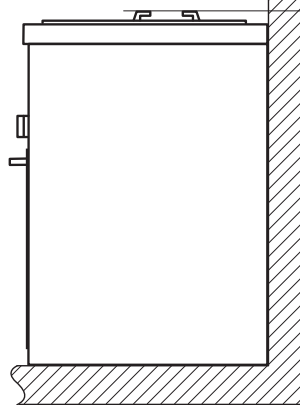
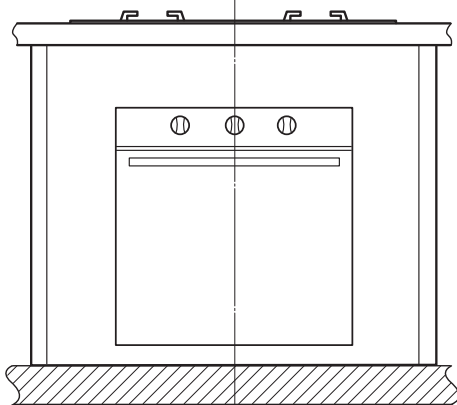
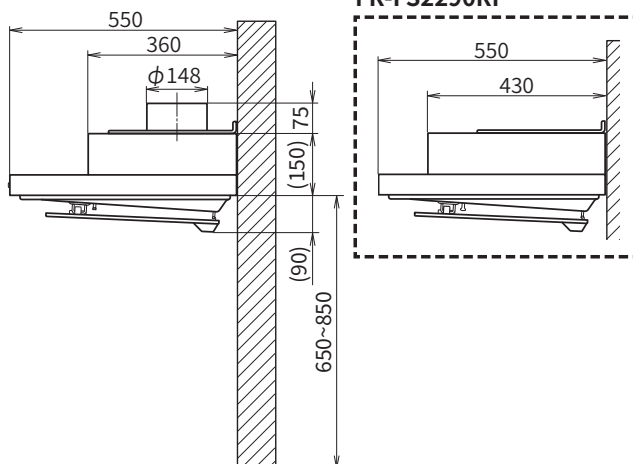
電源插頭
長度: 1.5m



吸油煙機
安裝孔細節



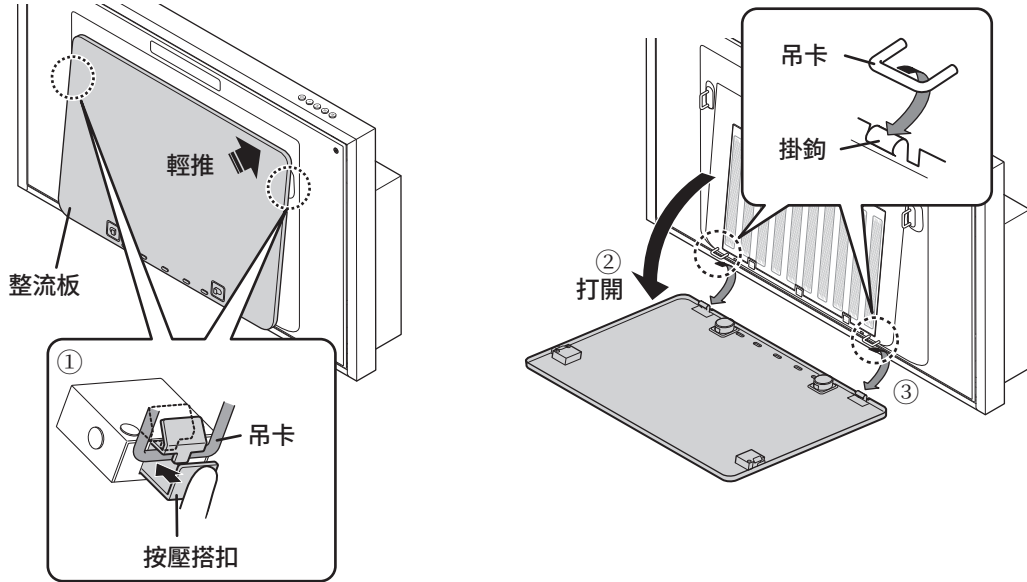
FR-FS2290RP



安裝前的準備工作

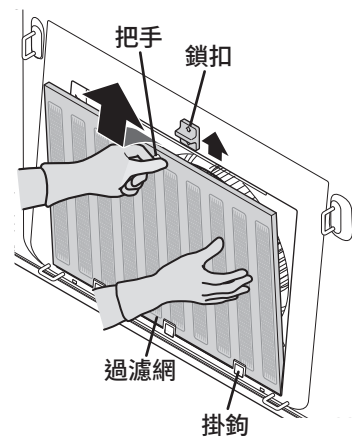
1 卸下整流板

- 1) 用雙手撐住整流板，輕輕向前推。按下整流板左右搭扣，使其分離（①）。
 - 2) 用雙手撐住整流板，慢慢將其分離（②）。
 - 3) 在右圖所示位置舉起整流板後端，將其從吸油煙機的吊卡上卸下（③）。
- * 確保同時卸下左右兩處。否則會造成金屬零部件變形。



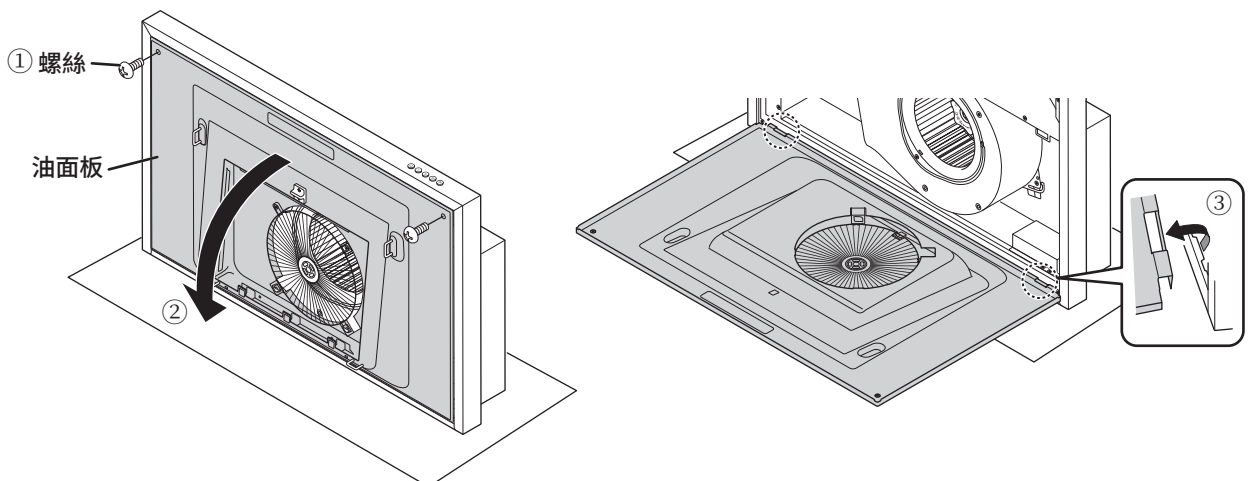
2 卸下過濾網

- 1) 握住過濾網把手，向上滑動鎖扣，將其拆下。
- 2) 取出過濾網，使其上移，同時用手支撐，使其不掉落，然後將其從主機底部的三個掛鉤上卸下。



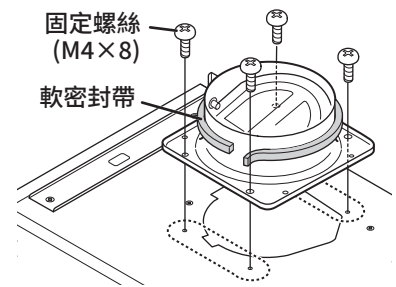
3 卸下油面板

- 1) 將油面板固定至機身的兩個螺絲擰鬆（①）。
- 2) 用雙手撐住油面板，慢慢將其分離（②）。
- 3) 在右下圖所示位置舉起油面板後端，將其從機身上卸下（③）。



4 固定排氣口 (僅限 FR-FS2270/90VP)

用提供的固定螺絲 (M4×8) 將提供的排氣口固定好。
然後在提供的排氣口周圍貼上提供的軟密封帶。



注意

連接排氣口時，應注意擋氣板的開啟方向。
如果安裝不當，可能導致排氣不暢、異常噪音等。

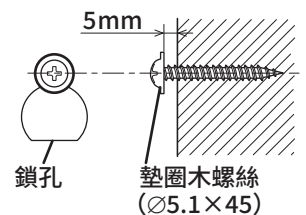


吸油煙機的安裝

掛牆式

1 將墊圈木螺絲擰入牆

參考第 48 頁的「確認安裝位置」，將提供的墊圈木螺絲 (Ø5.1×45) 插入安裝架左右鎖孔的安裝牆中。在牆壁和螺絲頭之間留出約 5mm 的間隙，以便懸掛吸油煙機。

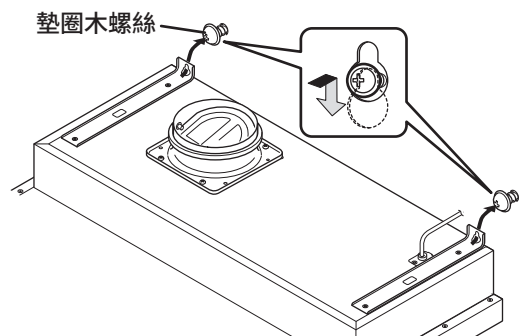


注意

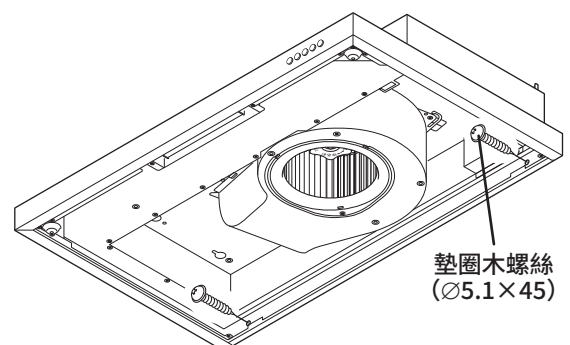
如需加固，請與安裝服務商聯繫接洽。

2 安裝吸煙油機

1) 將吸油煙機的鎖孔對準提供的墊圈木螺絲，並擰緊螺絲。



2) 將提供的 2 個墊圈木螺絲 (Ø5.1×45) 牢牢固定在吸油煙機的后端。



3 連接排氣管和排氣口

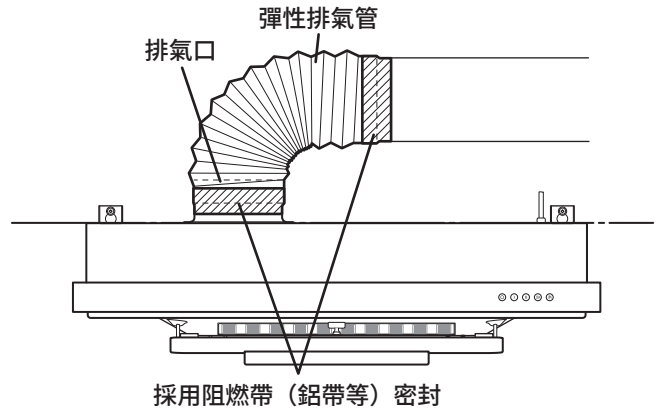
(僅限 FR-FS2270/90VP)

將 $\varnothing 150$ 彈性排氣管或類似零部件與提供的排氣口相連接。
使用阻燃帶，如鋁帶等（不隨機提供）固定提供的排氣口，並保證其氣密性。

注意

排氣管越長，通風效果越差。

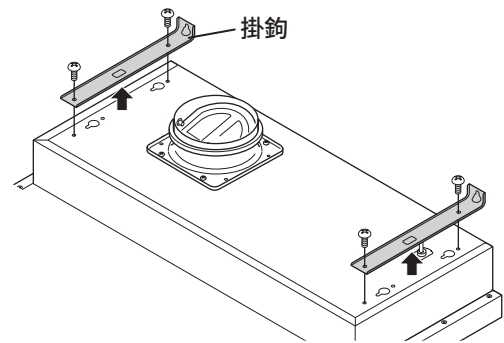
完成此操作後，繼續第 53 頁的「將卸下的零部件重新組裝起來」。



■ 上側安裝

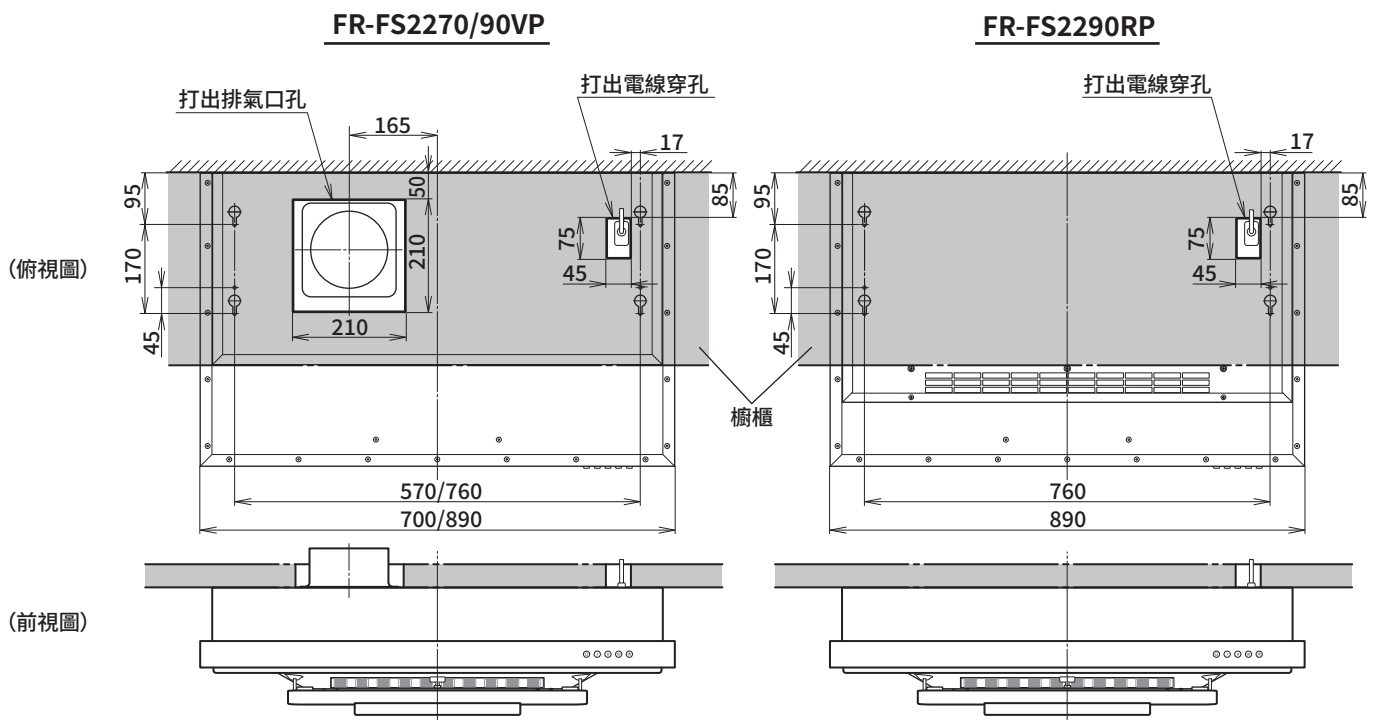
1 從吸油煙機上卸下掛鉤

卸下連接在吸油煙機上兩側的掛鉤。



2 在安裝面（櫥櫃）上打孔

參考下圖，在安裝面（櫥櫃）上打孔，用於穿過電線和當作排氣口（僅限 FR-FS2270/90VP）。

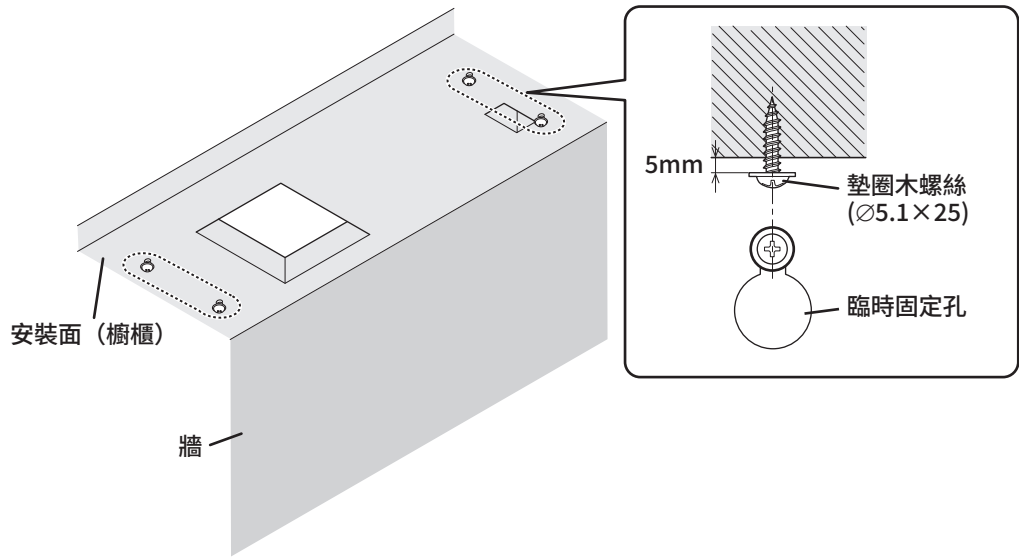


3 將墊圈木螺絲擰入安裝面

參考第 48 頁的「確認安裝位置」,將提供的墊圈木螺絲 (Ø5.1×25) 插入主機上側鎖孔的安裝面。在牆壁和螺絲頭之間留出約 5mm 的間隙,以便懸掛吸油煙機。

注意

如需加固,請與安裝服務商聯繫接洽。



4 在安裝面上安裝吸油煙機 (櫥櫃)

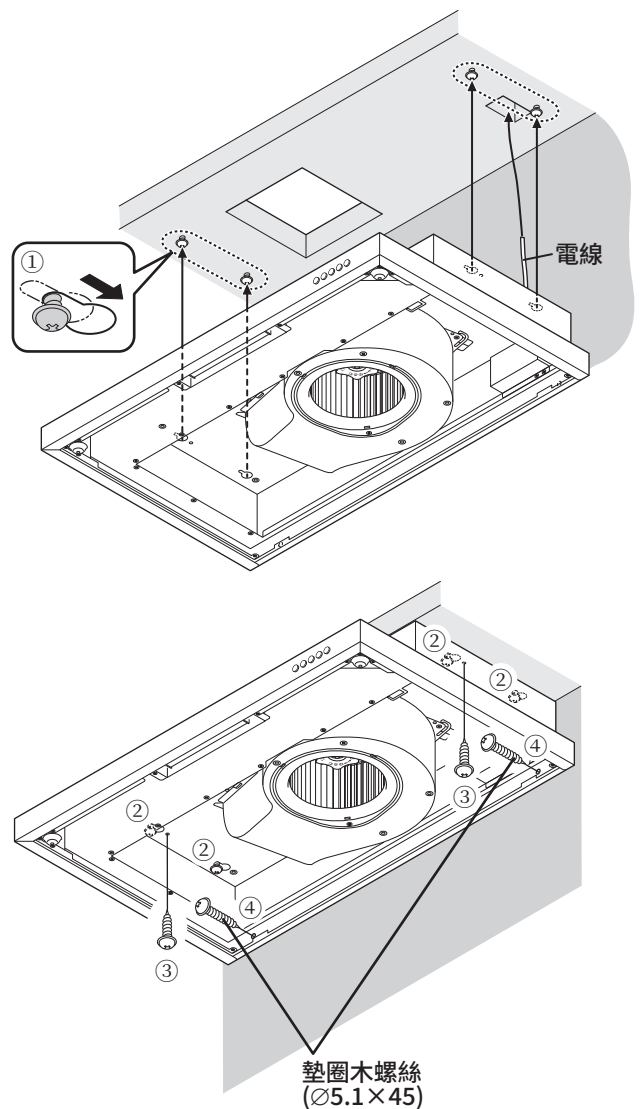
1) 如右側所示,將吸油煙機上側的臨時固定孔對準上述安裝好的螺絲插上去,並將臨時固定孔滑至螺絲的底端 (①)。

* 牢牢端住吸油煙機,確保吸油煙機在此過程中不會掉落。

2) 將 4 個提供的墊圈木螺絲 (Ø5.1×25) 完全擰入臨時固定孔中 (②)。

3) 將提供的 2 個墊圈木螺絲 (Ø5.1×25) 擰入吸油煙機上側的 2 個圓孔中,位置如右圖所示 (③)。

4) 將提供的 2 個墊圈木螺絲 (Ø5.1×45) 擰入主機後側的孔中,位置如右圖所示 (④)。



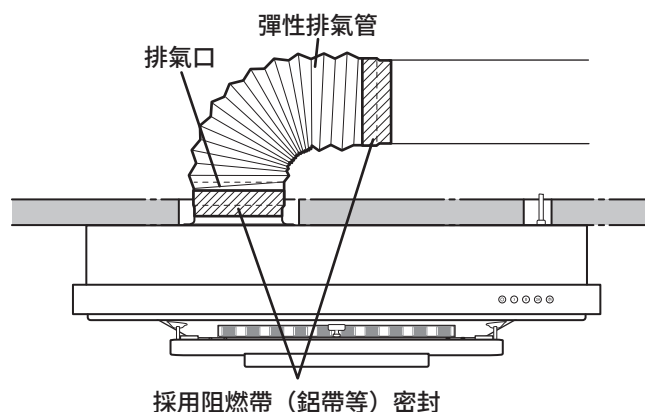
5 連接排氣管和排氣口 (僅限 FR-FS2270/90VP)

將 $\varnothing 150$ 彈性排氣管或類似零部件與提供的排氣口相連接。

使用阻燃帶，如鋁帶等（不隨機提供）固定提供的排氣口，並保證其氣密性。

注意

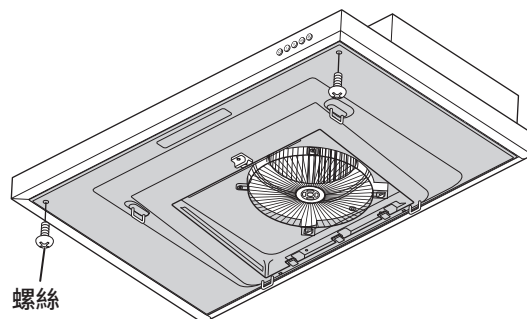
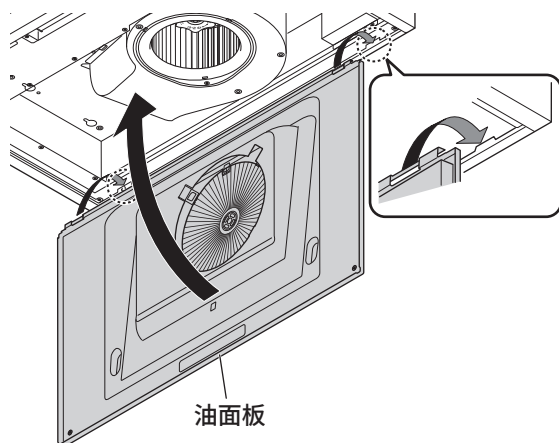
排氣管越長，通風效果越差。



將卸下的零部件重新組裝起來

1 安裝油面板

將油面板的後端卡住凹槽，然後抬起其前部。握住油面板，用 2 個螺絲將其固定。

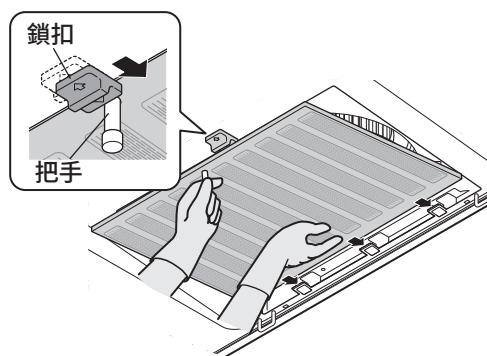


2 安裝過濾網

將主機搭扣插入過濾網後側，然後將過濾網前側推到主機上。向後滑動鎖扣，將過濾網固定就位。

注意

安裝過濾網時，務必用手握住過濾網。否則，過濾網可能會掉落，並導致人員受傷。

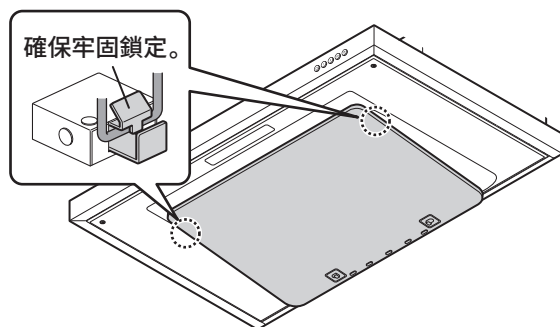
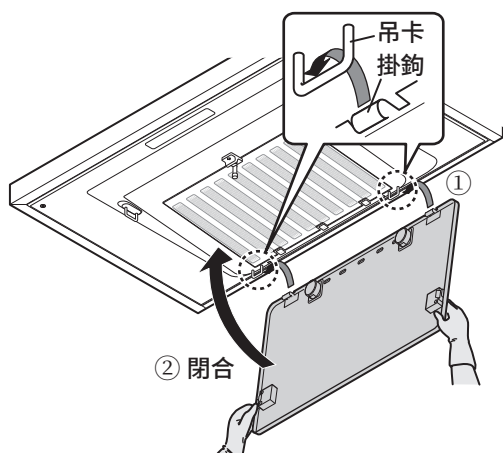


3 安裝整流板

- 1) 將整流板後端的左右掛鉤牢固吊掛在吸油煙機的吊卡 (①) 上。
 - 2) 雙手一邊撐住整流板，一邊向上舉起前端直到發出「咔嚓」聲，然後將其固定 (②)。
- 安裝完成後，上下拉動一下整流板，確保其不會掉落。

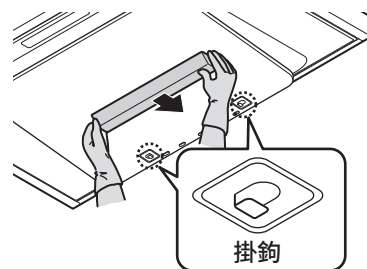
注意

為避免因未鎖好而導致固件脫落，請務必保證整流板固定到位。



4 安裝油杯

將提供的油杯安裝到整流板上。將提供的油杯的 2 個凸出部對準整流板的安裝掛鉤，插入，向後滑動，並將其固定。



運行檢查

關閉配電盤上的斷路器，然後將電源插頭插到插座上。

將斷路器打開後，再將吸油煙機打開，檢查其運行情況。有關操作按鍵和運行狀態，請參考第 46 頁說明。

- 吸油煙機運轉時，檢查風扇各檔位是否正常。
- 經檢查，確認無異常雜音或振動。

維修保養

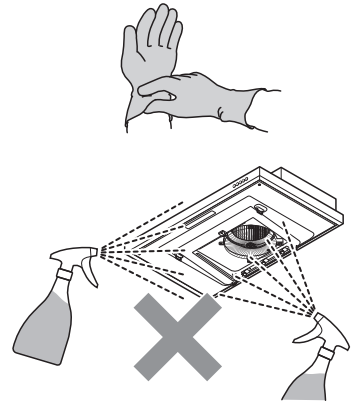
因吸油煙機容易附著油污，因此應經常清潔吸油煙機（尤其是每月至少清潔一次過濾網。如果一戶每天至少做兩頓飯，則應每兩週就清潔一次過濾網）。

如果長時間不清潔，吸油煙機上將會積聚大量油污，形成難以去除的油脂硬塊。

油杯、吸油煙機四周、整流板如有油污，應及時清潔（清潔頻率：約每月一次）。

維修保養注意事項

- 清潔吸油煙機前，務必從插座上拔下電源插頭，或關閉斷路器。
- 為安全起見，清潔過濾網等零部件時，應戴好橡膠手套。
- 特別注意，防止將水潑到電機、操作按鍵、接插件之類的電氣零部件上。請勿向電氣零部件噴灑任何類型的洗滌劑。否則會造成故障。



- 請勿用例如稀釋劑之類的溶劑、苯類、拋光粉等清潔塗漆表面、油面板等，否則會使這些零部件失去光澤或造成劃痕。
- 請勿用硬毛刷之類的物品擦洗各零部件，否則會使零部件受損。
- 如果不按照說明書規定進行清洗，吸油煙機可能存在起火危險。

拆卸 / 安裝需要清洗的零部件

請按照與拆卸時相反的步驟，安裝各零部件。

油杯

■ 拆卸

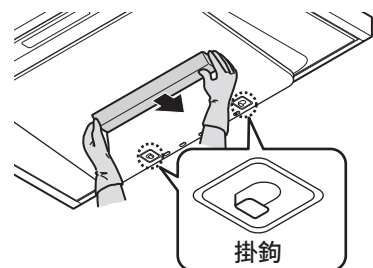
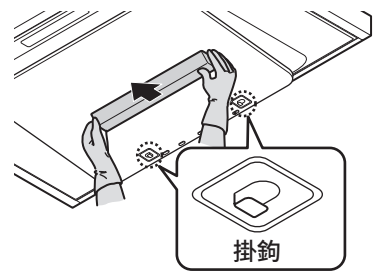
將 2 個突出部從整流板掛鉤中拉出，以拆下油杯。拆卸時，確保油杯內的油不會溢出或灑出。

注意

短時間內可能不會積聚大量廢油脂，這取決於使用頻率，這屬於正常現象。

■ 安裝

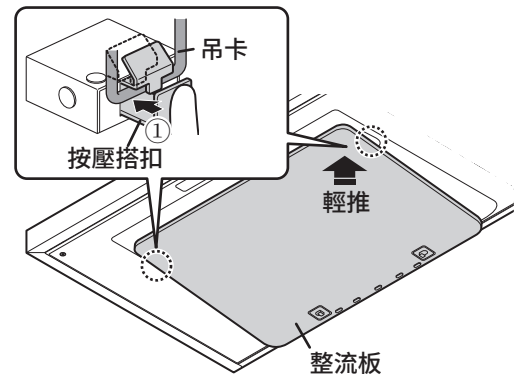
將油杯安裝到整流板上。將油杯的 2 個突出部與整流板的安裝掛鉤對齊。插入突出位置，向後滑動油杯並將其固定。



整流板

■ 拆卸

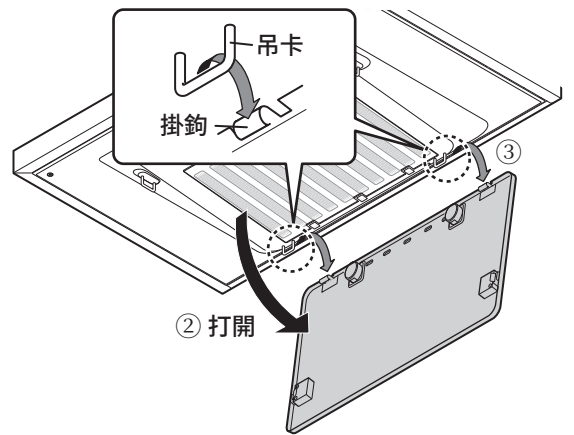
1) 用雙手撐住整流板，同時輕輕上推。按壓整流板的左右的搭扣，將其卸下（①）。



2) 用雙手支撐打開整流板，同時慢慢地將其卸下（②）。

3) 將整流板後端抬起，位置如右下圖所示，將其從吸油煙機的吊卡上卸下（③）。

* 請一定同時卸下左右兩處。否則會造成金屬零部件變形。

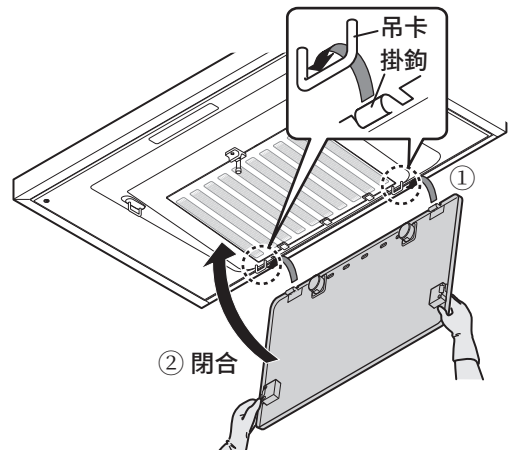


■ 卸下

1) 將整流板後端的左右掛鉤牢固吊掛在吸油煙機的吊卡上（①）。

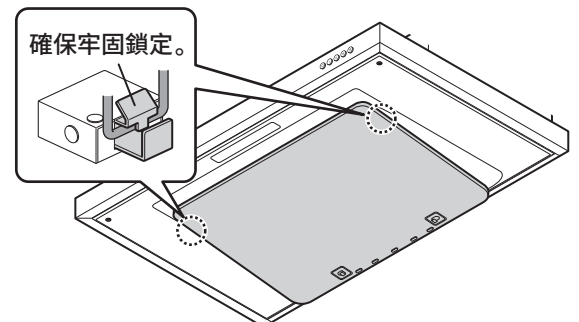
2) 雙手一邊撐住整流板，一邊向上舉起前端直到發出「咔嚓」聲，將其固定（②）。

安裝後，上下拉動一下整流板，確認其安裝牢固不會脫落。



注意

為避免因未鎖好而導致固件脫落，請務必保證整流板固定到位。



過濾網

■ 拆卸

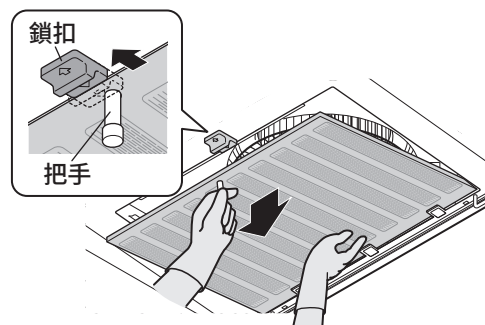
握住過濾網的把手，向前滑動鎖扣，將其拆下。

向前移動拉出過濾網，同時用手撐住，確保其不會掉落，然後將其從主機底部的三個掛鉤上拆下。

注意

拆卸過濾網時，務必用手握住。

否則，過濾網可能會掉落，進而導致受傷。



過濾網的拆卸 / 組裝

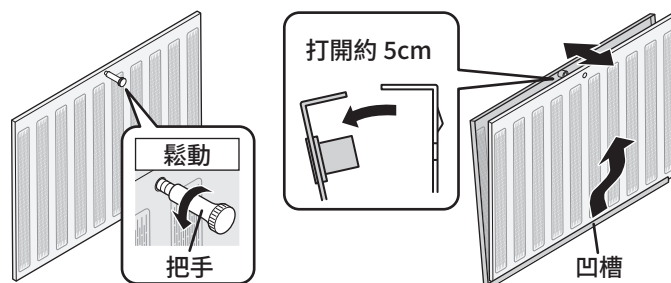
FR-FS2290RP (循環型)：僅適用於雙濾網

【拆卸】

1) 按鬆開方向，轉動把手，將其拆下。

* 請勿弄丟拆下的把手。

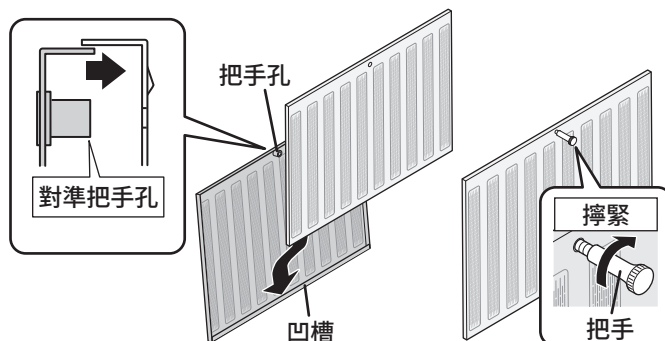
2) 將上側（螺孔所在位置）打開約 5cm，然後將過濾網從底部的凹槽中拉出，將其拆下。



【組裝】

1) 使過濾網的把手孔對準同一位置，將過濾網安裝到凹槽中。

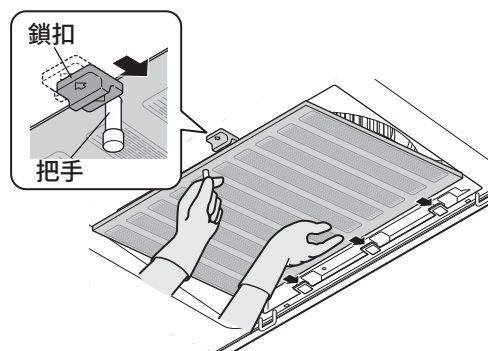
2) 按擰緊方向，轉動把手，使其固定到位。



■ 安裝

將主機掛扣插入過濾網後側，然後將過濾網前側推到主機上。

向後滑動鎖扣，將過濾網固定到位。



清潔

機身

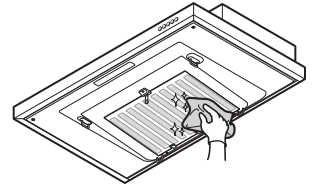
使用中性清潔劑和軟布進行清潔。

嚴禁使用有機溶劑。清潔後，用沾水的濕布擦拭吸油煙機，去除所有殘留的清潔劑，最後用乾布徹底擦掉所有水分。

油杯 / 整流板 / 過濾網

使用中性清潔劑和軟布進行清潔。

嚴禁使用有機溶劑。清潔後，用水沖洗乾淨，去除所有殘留的清潔劑，最後用乾布徹底擦掉所有水分。

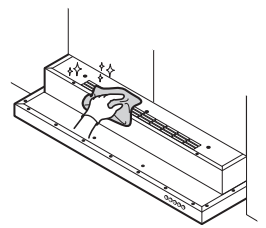


注意

清潔整流板時，應將其放在平坦表面上，避免導致任何變形。

排氣口 / 櫥櫃 (僅限 FR-FS2290RP)

如未定期清潔整流板和過濾網，油污可能會積聚在排氣口或櫥櫃上。如在排氣口或櫥櫃處發現油污，請使用中性洗滌劑和軟布擦拭。請勿使用有機溶劑。清潔後，用沾水的濕布擦拭排氣口或櫥櫃，擦乾淨洗滌劑，最後用乾布徹底擦掉所有水分。



風扇

關於風扇的清潔，請諮詢富士皇或代理商。

維修保養

其他資訊

其他資訊

規格

FR-FS2270/90VP (排氣型)

額定電壓 (V)	檔位	額定頻率 (Hz)	耗電功率 (W)	風量 (m ³ /h)	噪音 (dB)
220	高檔	50	105	545	50
	中檔		75	420	45
	低檔		55	330	39
230	高檔	50	110	555	51
	中檔		80	440	46
	低檔		60	350	40
240	高檔	50	115	565	52
	中檔		85	460	47
	低檔		65	370	41

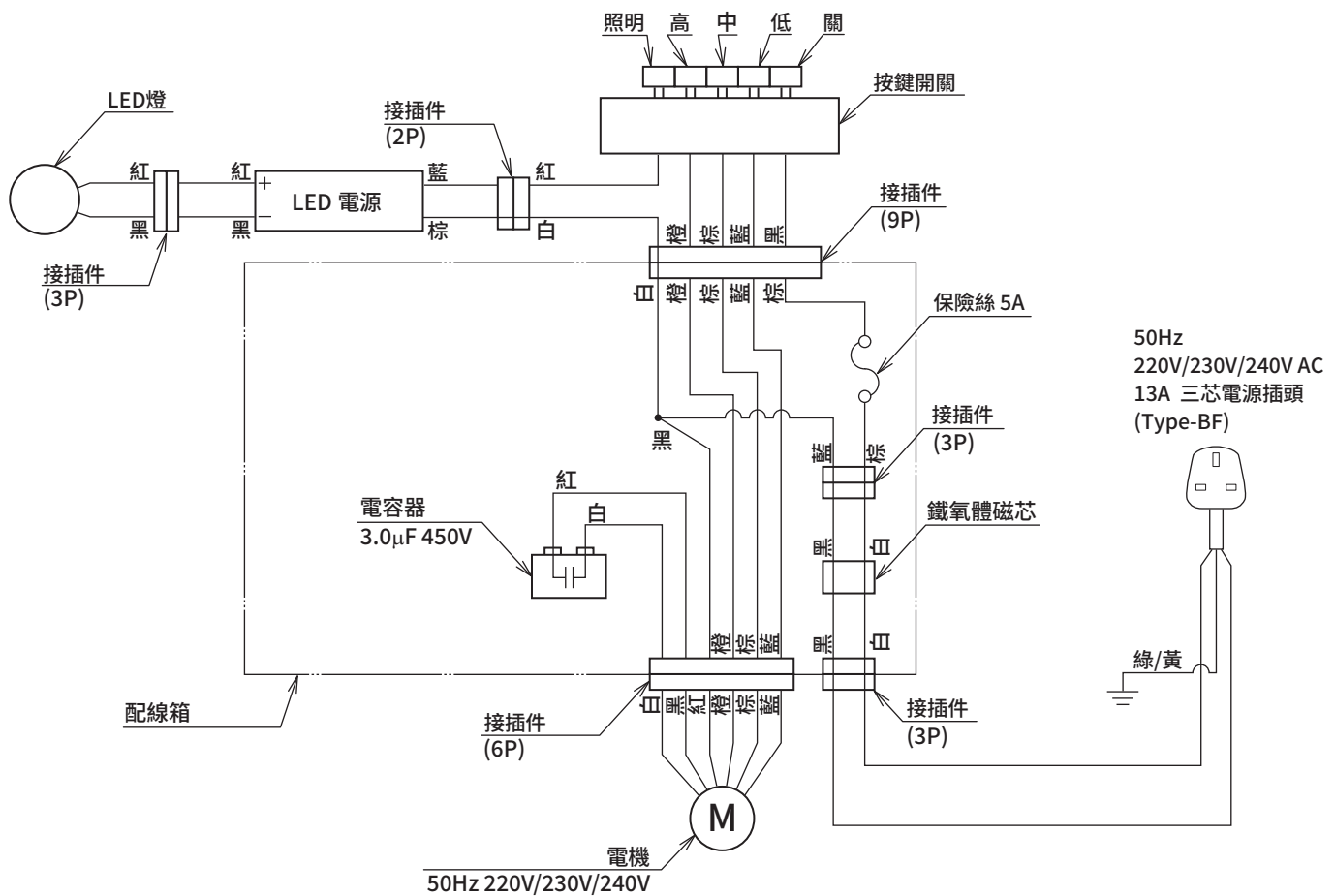
* 消耗功率含照明燈 3.5W

FR-FS2290RP (循環型)

額定電壓 (V)	檔位	額定頻率 (Hz)	耗電功率 (W)	風量 (m ³ /h)	噪音 (dB)
220	高檔	50	90	395	53
	中檔		65	340	49
	低檔		50	285	45
230	高檔	50	95	400	53
	中檔		70	350	50
	低檔		55	300	46
240	高檔	50	100	405	53
	中檔		75	360	51
	低檔		60	310	47

* 消耗功率含照明燈 3.5W

電路圖



其他資訊

維修與保固

申請維修：

在操作過程中如果發生異常，應立即關掉吸油煙機進行檢查：

- 1) 保險絲是否熔斷了？
- 2) 電源插頭與插座的連接是否正確？

若確認不是上述問題，請立即拔出電源插頭，與當初購買本機時的銷售商聯繫。與銷售商聯繫時，需說明產品型號及購買日期。

5
years

- 本型號機停止生產後仍可提供維修所需性能零部件的最低保證期為 5 年。

性能零部件是指維持吸油煙機正常使用功能所必需的基本零部件。

對於相同類型可互換零部件的提供保證期可再延長 4 年。

在對使用不產生影響的前提下，我們將按照您的要求選用這些零部件進行維修。

- 為提高吸油煙機性能，有可能在不預先通知的情況下進行產品零部件的更新。

全球網站

www.fujioh.com

FUJIOH INTERNATIONAL TRADING PTE. LTD.

東南亞地區總部

3014A Ubi Road 1 #06-04, Singapore 408703

Tel : (65) 6286 3286 Fax : (65) 6285 3285

E-mail : fit@fujioh.com.sg