



Cooker Hood
Instruction Manual

FR-SW2590V BK
FR-SW2590V GR

Please read this manual carefully
before using this appliance.

Content	Page
Prohibited Items.....	1
Safety Warning.....	1-2
Notes.....	2
Packing list.....	2
Product structure schematic.....	3
Product dimension.....	3
Specifications.....	4
Installation guide.....	4-8
Control panel operation.....	9-11
Troubleshooting.....	12
Maintenance.....	12-13
Electrical schematic diagram.....	13

To avoid accidental injuries caused by improper use, please read the user manual carefully before use and store it properly.

If you forcibly operate the equipment in violation of the following safety instructions, it may lead to major accidents, including fires, kitchen water leakage and personal safety injuries. This product is designed for home use only. Do not use it outdoors, on non-ground surfaces, in commercial or industrial environments.

This range hood is of the exhaust type.

Prohibited items

- After installation, please ensure that the power sockets are not covered. Do not connect the power through power strips, duplex sockets or electrical delay devices.
Any accidents caused by the lack of grounding devices or grounding faults will not be the responsibility of our company.
- Wiping the surface of the range hood with corrosive cleaners will affect the appearance.
- The gases emitted by the appliance cannot be discharged into the flue used to discharge the smoke generated from appliances that burn gas or other fuels.
- It is prohibited to directly heat the range hood with flames.

Safety warning

- If the machine malfunctions and the user cannot solve it by referring to the manual, it must be repaired by professional technicians. Unauthorized disassembly and repair are strictly prohibited.
- The power supply of this appliance must be connected to the ground for its functional purpose. When there is an electric leakage, the resistance of the ground wire is extremely low, which can divert a large portion of the current and protect the person who gets an electric shock to the greatest extent.
- If the power cord is damaged, to avoid danger, it must be replaced by the manufacturer, its service agency or a similar professional.
- During thunderstorm weather, the power supply must be disconnected.
- When the range hood is used simultaneously with appliances that burn gas or other fuels, the room should be well ventilated.
- If the oil pan catches fire while cooking, while covering the pan to extinguish the fire, the power plug of the range hood should be unplugged immediately. If the range hood is not turned off, it will help to increase the fire, which is extremely dangerous!
- This appliance is not intended to be used by people with physical, sensory or mental disabilities or those lacking experience and knowledge in using it (including children), unless there is a person responsible for their safety who supervises and guides them regarding the use of the appliance.
- If not cleaned according to the instructions for use, there is a risk of fire.
- If there is a gas leak, do not use the range hood; otherwise, there will be a risk of causing a fire.
- When replacing the lighting lamp or fuse, first unplug the power plug to ensure safety. When replacing the lighting bulb in the range hood, the maximum power mark of the lighting lamp should be clearly visible.
- The maximum altitude for this product is 4000 meters.
- During use of the cooking appliance, the components that are easily touched may become hot.
- When the range hood is not used for a long time, please unplug the power plug or turn off the switch on the socket.
- Take good care of children to ensure they do not play with this appliance.
- This range hood should not be installed above a stove with more than 4 burners.
- During use, please fully insert the power plug of the household appliance into the power socket and keep the power plug in good contact with the socket.

- When using an extension power socket, please use an extension power socket that meets national standards requirements.
- When personnel leave the site, please disconnect the power supply.
- If abnormal noise, abnormal smell, abnormal high temperature or malfunction occurs with the product, please immediately stop using it, turn off the switch and disconnect the power supply.
- If the household appliance is filled with flammable refrigerant and abnormal conditions occur, before turning off the switch, natural ventilation measures should be taken to avoid the accumulation of flammable refrigerant.
- Do not connect the power supply to household appliances from the lamp head with a socket.
- The total rated current value of the household appliances connected to the extension power socket should not exceed the rated current value of the original fixed socket or the line.
- This product should not be used near flammable and explosive items or in similar environments.
- Users should not disassemble household appliances by themselves, nor change the internal wiring, components and protection devices.
- When pulling out the plug, do not apply tension to the power cord.
- Users should not replace the fuse of the household appliance and the power supply with ordinary conductors or fuses exceeding the specified current capacity.
- Users should not change the setting value of the low-voltage circuit breaker or residual current action protector by themselves.

Notes

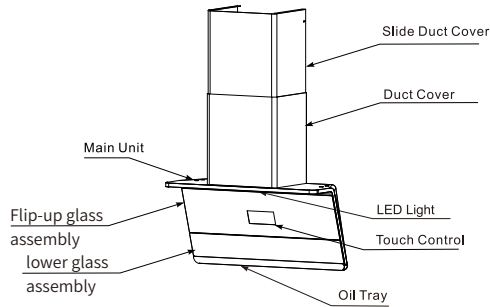
- If used in a humid environment, it will cause the machine to rust easily and even lead to electric leakage.
- Please store the packaging bags properly and keep them away from children to prevent them from touching or playing with them. When disposing of them, please cut the bags into pieces.
- When the old range hood is no longer usable, please unplug the power supply, cut the power cord, and assist relevant departments in proper disposal or recycling to protect the environment.
- Before use, remove the protective film or fixing tape on the surface of the range hood.
- Installation precautions and methods are detailed on pages 4-8.

Packing list

The following product components are attached to the product package. Please check them upon opening. If any components are missing, please contact the service center or your dealer.

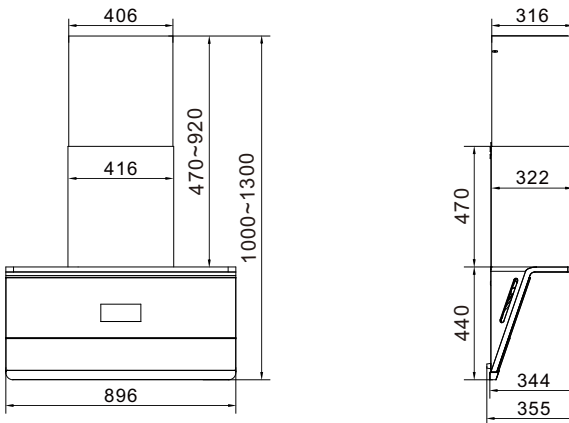
No.	Name	Quantity	No.	Name	Quantity
1	Instruction Manual	1pcs	7	Exhaust Outlet	1pcs
2	Main Unit	1pcs	8	Screws ST5×50	5pcs
3	Oil Tray	1pcs	9	Plastic Expansion Pipe Φ10	5pcs
4	Hanging Bracket	1pcs	10	Screw M4×20	10pcs
5	Flexible Duct	1pcs	11	Duct Cover Fixing Bracket	1pcs
6	Air Outlet Pad	1pcs	12	Screw M4×10	2pcs

Product structure schematic

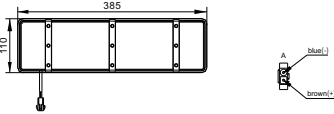


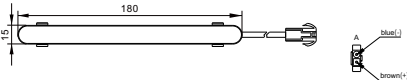
Product dimension

(Unit: mm)



Schematic diagram of the lighting lamp structure

Lamp image	Lamp information	
	Lamp Type	72 LED lamp strains
	Max Power	5W×1
	Voltage	12V DC
	Size	385×110mm

Lamp image	Lamp information	
	Lamp Type	15 LED lamp strains
	Max Power	2W×2
	Voltage	12V DC
	Size	180×15mm

Specifications

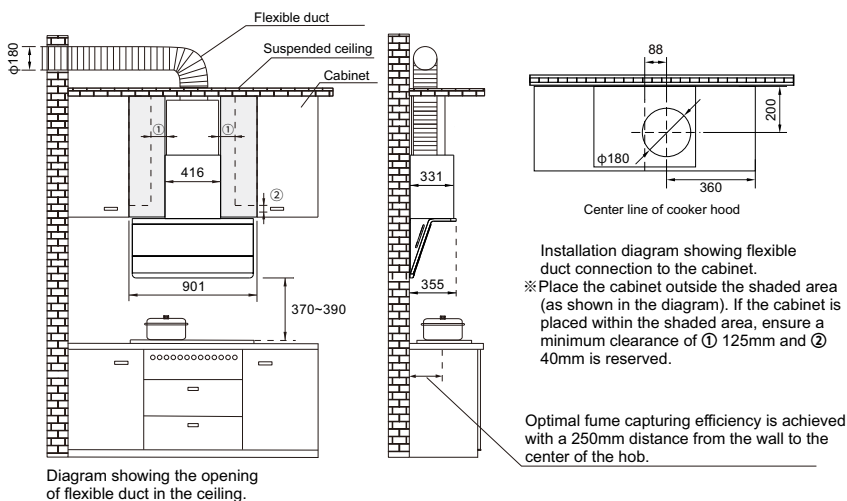
Product Name	Cooker Hood			
Product Model	FR-SW2590V BK / FR-SW2590V GR			
Power Supply	220V-240V~ 50-60Hz	Motor Input Power	188W	
Rated Power	193W	Boost Power	380W	
Heating Power	50W	Lighting Power	5W×1	
Max Air Flow	1060m³/h	Air Flow(Turbo)	1650m³/h	
Rated Voltage (V)	Speed	Power Consumption (W)	Air Flow (m³/h)	Sound (dB)
240	Fb	363	1650	57
	F3	111	1060	43
	F2	84	940	41
	F1	71	865	40

Installation guide

To determine the location (unit: mm)

Install the cooker hood horizontally, ensuring that all ends (left, right, front, and back) are aligned in a straight line.

If it is not properly aligned, smoke capturing may be poor, and internal dirt (Greasy Dirt) could drip onto the cooking appliance through gaps in various parts of the cooker hood.

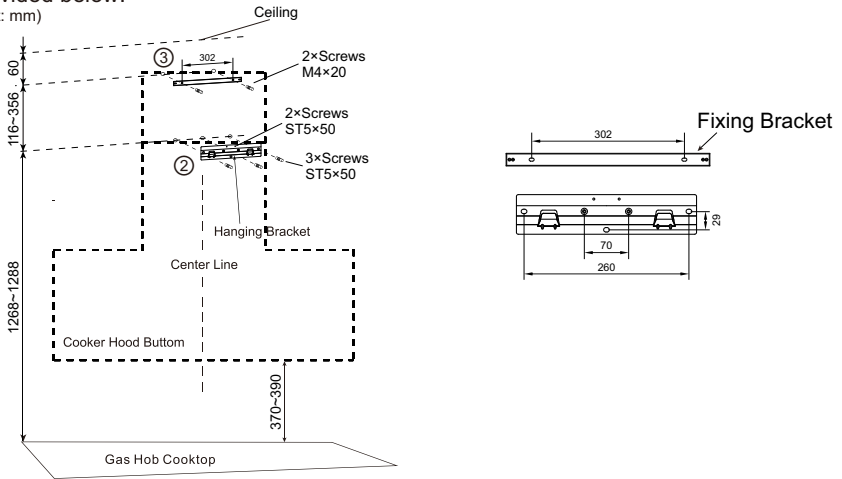


Installation precautions

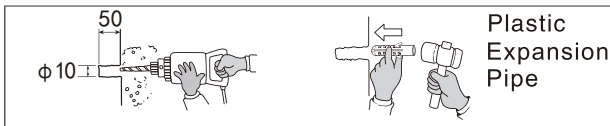
- After installing the cooker hood, ensure that both ends are aligned evenly.
- Avoid excessive breezes and air currents near the cooker hood, as they may affect its efficiency.
- The requirements for the exhaust pipe should be fulfilled.
- The Flexible tube duct should not be excessively long.

Cooker hood installation (Unit: mm)

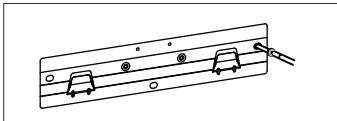
1. Mark the mounting position of the hanging bracket according to the instructions provided below:
(Unit: mm)



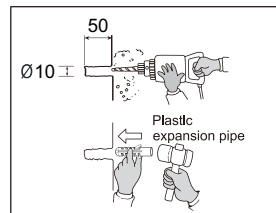
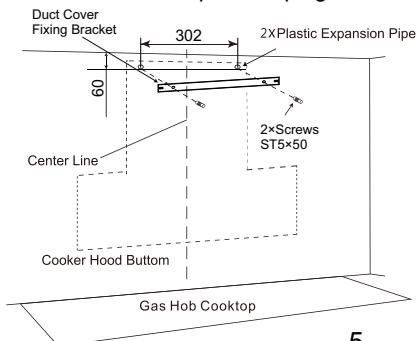
2. Drill holes with a diameter of 10mm and a depth of 50mm at the 3 marked screw positions, then insert the plastic expansion plugs into the holes.



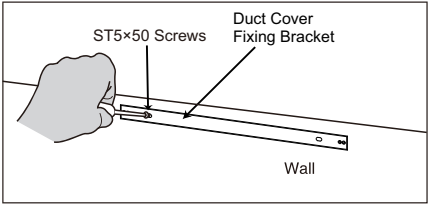
3. First fix the hanging bracket with 3 pcs ST5x50 screws.



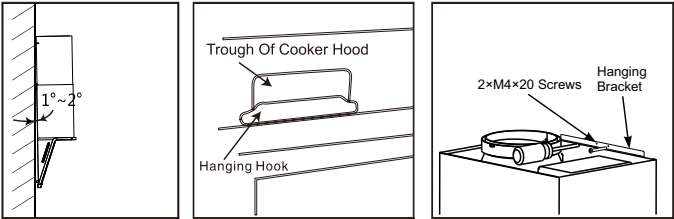
4. Mark the location of the 2 screws on the wall, ensuring they are positioned 60mm from the top of the cabinet. Drill holes with a diameter of 10mm and a depth of 50mm, then insert the expansion plugs.



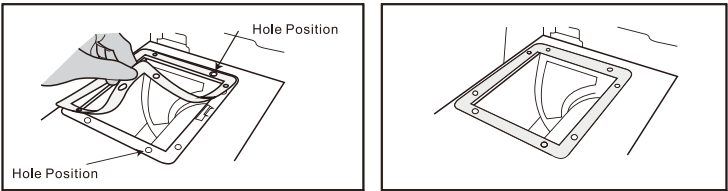
5. Use 2 pcs ST5×50 screws to install the slide duct cover fixing bracket to the wall.



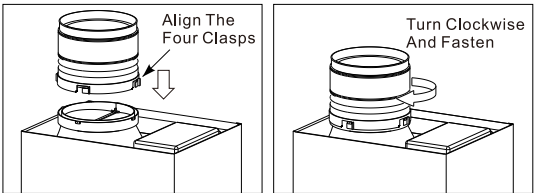
6. Install the main unit on the wall. Ensure that both the main unit and the wall are tilted 1 to 2 degree, so that the Duct Cover Fixing Bracket of the main unit hanging bracket can be fully inserted and secured into the slot. After hanging the cooker hood, verify its horizontal alignment and ensure the main unit is completely flush with the wall. Use 2 pcs M4×20 screw to secure it and prevent the main unit from falling due to mishandling.



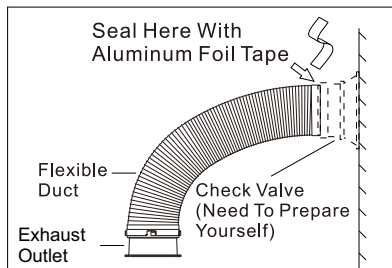
7. Place air outlet pad at exhaust outlet (may need to remove screws in advance) as shown below. Make sure the air outlet pad are aligned correctly. This step can be prepared in advance depending on the installation space.



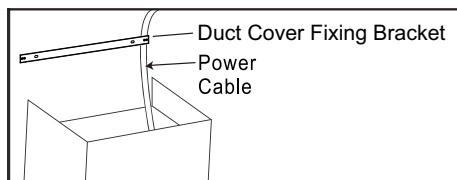
8. Insert the flexible duct in to the exhaust outlet. There are four clasps between the fixed end of the flexible and the exhaust port. Align with each other and fasten the clasps clockwise.



9. Properly extend the exhaust pipe and direct it outdoors, minimizing the number of turns, preferably only once. Ensure the turning radius is large and gentle, avoiding tight, sharp bends. If your home has an existing check valve on the wall, connect the exhaust pipe to the check valve and seal it using the aluminum foil tape provided with the exhaust pipe fittings. If there is no check valve in the home, find a way to seal the outdoor exhaust port slightly below the indoor wall opening to prevent oil back flow.



10. Use tape to fix the power cable as shown.



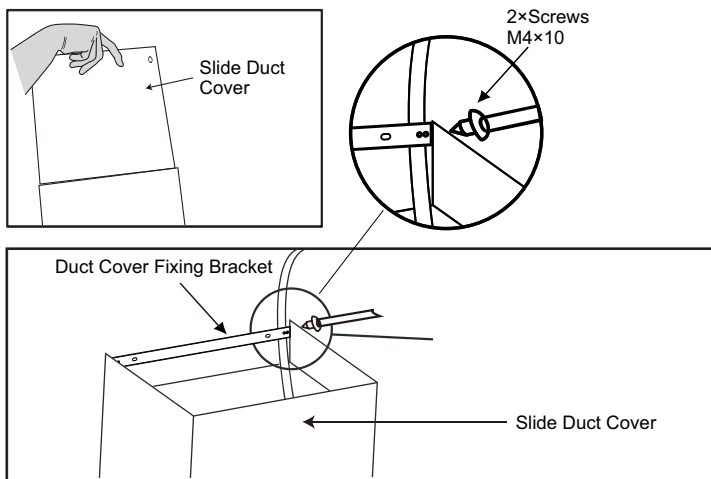
Warning

Do not run the power cable along the surface of the extended duct to avoid the risk of fire or electric shock.

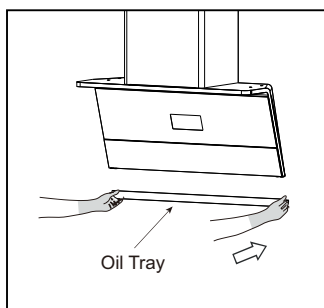
Caution

Ensure that the installation screws are tightened; otherwise, fumes may leak. Properly control and extend the extended duct to lead outdoors with minimal bending (ideally one bend) and ensure the bending angle is greater than 120 degrees to avoid sharp angles. The outlet end should be positioned slightly lower to prevent oil reflux.

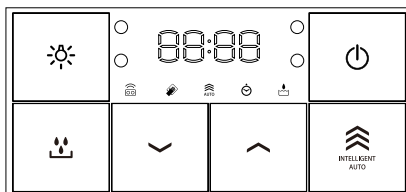
11. To install the slide duct cover, lift it up from the main unit of the cooker hood and secure it to the bracket using the provided fixing screw set. Ensure the screws do not come into contact with the power cord during installation.



12. Insert the oil tray into the slot and push it all the way to the rear end of the product.
 Note: When inserting the oil, be careful not to damage the oil tray.



Control panel operation



■ On position:

1. After power-on, all indicator will light up (and the buzzer will emit a "ding" sound) for 2 seconds and then go off, indicating that the power is connected and the control board has entered the power-on state. When powered on, the indicator of the "☀️" and the "🔌" are half-lit, while the indicator lights of other keys are not lit.
2. After the cooker hood has been working continuously without operation for 5 hours, it enters the power-on state.
3. After five minutes of standby mode, it enters the power-on mode.
4. The lighting lamp is lit alone or together with the "🔌" indicator light. After working for 5 hours, it enters the power-on state.

■ Standby Mode:

When powered on, press the "🔌" once. The indicator of other keys will be half-lit (the indicator of the "🔌" will be fully lit, and the flip board will not be opened). This is the standby state.

■ Power/Timer/Clock Setting: 🔌

1.Power:

When powered on, press the "🔌" once and the cooker hood will enter the standby state. Press the "🔌" again and the cooker hood will enter the power-on state.

2. Timer function: When the fan is in operation, touch the "🔌" to enter the 3-minute Timer state. The "🔌" indicator light will flash, and the fan will continue to operate at the position before the Timer. The display screen will show a 3-minute countdown. After the countdown ends, the fan stops running, the lamp indicator and all key indicator lights will go out, and the cooker hood will enter the power-on state. During the countdown process for Timer, touch the "🔌" again, and the cooker hood will directly enter the power-on state (including lighting).

3.Clock Setting:

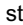
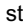
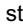
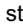
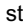
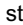
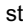
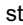
When powered on, press and hold the "🔌" for 3 seconds. The "🔌" indicator will remain on, while the "↙️" and "↗️" will flash (all other key indicator lights will be half - lit). At the same time, the hour position on the display screen will flash, indicating that it has entered the time setting state. By default, it is set to the hour position (each time the "↗️" is pressed, the time increases by 1 unit). Each time the "↙️" is pressed, the time decreases by 1 unit (hours can be selected in a cycle from 0 to 23, and minutes can be selected in a cycle from 0 to 59). After setting the hours, press the "🔌" again to switch to the minute setting (the minute position flashes). After setting it up, press the "🔌" again to save the time setting and exit the time setting state, or automatically save the time setting and exit the time setting state after 5 seconds without any operation.

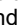
■ Intelligent Auto: 🌀

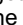
In standby mode, Press the "🌀", and the indicator of the "🌀" remains on. The indicator of the other keys that have not been started are half on. The fan enters the auto operation state. In the auto operation state, the fan automatically adjusts the fan

operation speed according to the surface temperature change of the cooking appliance, and the display shows "A".

■ Up Key:







1. When in standby mode or smart mode, press the "" once. The "" indicator will remain on, the display will show F1, and the fan will enter the "F1" mode. Press the "" again. The "" indicator will remain on, the display will show F2, and the fan will enter the "F2" mode. Press the "" again. The "" indicator will remain on. The display screen shows F3. The fan enters the "F3" mode to operate. When the fan is running at F3 speed, pressing the "" once again will not cause any response from the fan. The "" is for upshifting. Each time you shift gears, the corresponding gear is displayed.

2. Press and hold the "" for 3 seconds to directly enter the boost mode (run at the maximum speed for 3 minutes) and display "Fb". After 3 minutes, it will automatically return to the F3 mode by default (display F3). Within 3 minutes, press the "Intelligent Auto key" to exit the boost mode and switch to the smart mode operation, and the fan will enter the corresponding gear state to operate. In the boost mode, if you press any other gear key, it will switch to the F3 gear and operate.





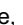
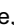


Note:(1) The boost mode can only be operated by holding down the "" key for 3 seconds in any gear setting.

(2) In the automatic transmission mode, the digital display window only shows "A". In the boost mode, the digital display window only shows "Fb", not the rotational speed.

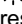
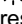
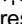
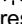
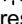
■ Down key:

When in standby mode or smart mode, press the "" once. The "" indicator will remain on, and the display will show F3, indicating that the fan is running at "F3" mode. Press the "" again, and the display will show F2, indicating that the fan is running at "F2" mode. Press the "" again, and the display will show F1, indicating that the fan is running at "F1" mode. When the F1 mode is activated, pressing the "" again will have no effect on the fan. The "" is for downshifting. Each time you shift gears, the corresponding gear is displayed.

■ Heat clean Key:

When in standby mode, press the "" once. The "" indicator will remain on, and the Heat clean function will be activated. (After the heating module works for 10 minutes, the fan will work in F3 mode for 1 minute, at which point the "" indicator will flash.) After the Heat clean is completed, the cooker hood will automatically enter the power-on state (if the lamp indicator is on, the lighting will be turned off simultaneously). When the Heat clean function is in operation, it can be turned off by pressing the "" or the "". Note:(1) When entering the Heat clean function, the display screen shows an 11-minute countdown. (2) When entering the Heat clean function, all function keys except the "", "" and "" are locked, and the operation is invalid.

■ Lighting Key:

1. In any state, press the "" once. The indicator of the "" will light up and the lighting lamp will work. Press the "" again. The indicator of the "" will go out and turn off the lighting. The "" can be controlled independently.

2. After power-on and in standby mode, a short press of the lighting key turns on the external light → Press the button to start the fan, the external light immediately goes off and the internal light turns on → (Short press the lighting key) both the internal and external lights turn on simultaneously → (Short press) all lights go off → (Short press) the internal light turns on → (Short press the lighting key) both the internal and external lights turn on simultaneously → (Short press) all lights go off → (Short press) the internal light turns on. This cycle continues. The ambient light is operated independently by long pressing.

3. The ambient lights can be controlled separately for on and off.

(1) Turn off the ambient light: When the device is powered on, press the "☼" for 3 seconds. The indicator light of this key will flash twice, and at the same time, the buzzer will make a ding sound. At this point, the ambient light will be turned off. The lighting can still be controlled independently for on and off.

(2) Turn on the ambient light: When the device is powered on, press the "☼" for 3 seconds. The indicator light of this key will flash twice, and at the same time, the buzzer will make a ding sound. At this point, the ambient light will be turned on.

■ Gas Hob Linkage: ☺

1. In standby (with the screen half-lit) mode, press and hold the "↘" for 5 seconds. The "☺" icon flashes for 15 seconds, indicating that it has entered the settable code matching state. When the gas hob is turned on (that is, the wireless transmitter is powered on and sends a signal), the cooker hood receives the signal. Then, all the key will light up, the "↘" indicator light will remain on (the smart mode is running), and at the same time, a "ding-dong" sound will beep, indicating that the code matching is completed. The code matching status has a power-off memory function. If the cooker hood does not receive a signal, the "☺" icon will keep flashing for 15 seconds before going out, and at the same time, the buzzer will make two "ding-dong" sounds, indicating that the code matching is not completed.

2. The on-off interlocking function is not controlled by the "☺" and can be directly interlocked through the gas hob. That is, after the code matching is successful, the cooker hood can be turned on through the gas hob without turning on the "☺". After the cooker hood is turned on, the "☺" and the corresponding air flow key indicator light remain on. After the gas hob is turned off, if no transmission signal is received three times, the cooker hood will turn off (the cooker hood will enter a 3-minute delay to turn off and turn off after 3 minutes). The "☺" and the corresponding gear key indicator light will go out.

3. When the power is on and the interlocking function is enabled, press and hold the "↘" for 3 seconds. The "☺" icon will flash for 5 seconds and then go off, indicating that the code clearing is successful.

4. After turning on the gas hob, the cooker hood is turned on and defaults to the intelligent auto.

5. When the hob is turned off, the cooker hood.... the cooker hood shows a countdown to shut down.

■ Oil tray status notification: ☼

1. When the fan has been running at any speed for a cumulative total of 15 hours, the "☼" icon indicator light will light up, reminding the user to clean the oil tray. After the user finishes cleaning, in standby mode, press and hold the "☼" for 3 seconds. The "☼" indicator light will flash three times and then go off, and the timer will automatically reset to zero (indicating that the oil has been poured out).

2. After the timing is up, each time the user turns on the cooker hood, a reminder will be given three times when the cooker hood is turned on three times. After three times, it is assumed that the user has completed the oil tray cleaning. The timer will automatically reset to zero and the "☼" indicator will automatically go off.

■ Cleaning Mode:

In standby mode, press the "↘" / "↗" simultaneously for 5 seconds. When the "ding Dong" prompt sound is emitted once, the "↘" / "↗" will light up simultaneously, and the flip plate will open to enter the cleaning mode. All other key indicator lights will go out and become ineffective. In this state, cleaning tasks such as removing the lower glass component, cleaning the inner cavity, and the back of the flip plate can be carried out. Press the "↘" / "↗" simultaneously for 5 seconds. The "ding-dong" prompt sound will restore the original state.

■ Gesture Control:

1. When powered on, wave your hand from left to right, and the entire machine enters the smart mode. "☰", "⏻", and "⏻" will light up, the cooker hood's lighting will turn on, and the fan will start running. Wave it again. The "⏻" indicator will come on and the screen will show F1. Wave it again. The "⏻" indicator will come on and the screen will show F2. Wave it again. The "⏻" indicator will come on and the screen will show F3. Wave it again. Only the "☰" and "⏻" indicator will come on, and the screen will show "Fb". (A→F1→F2→F3→Fb→A) cycle in sequence.
2. When the fan operates at any air flow, wave your hand from right to left. First, it will turn to the Timer mode and enter a 3-minute Timer. Within 3 minutes, wave your hand from right to left to directly shut down the fan. If the lighting is on, it will be turned off together.
3. Gesture function on/Off: The gesture function is enabled by default at the factory. In standby mode, press and hold the "⏻" for 5 seconds to turn the gesture function on or off.

Troubleshooting

Fault	Possible Cause	Solution
The light turns on, but the motor does not operate.	Fan switch has been turned off.	Switch on the fan operation.
	Fan switch has failed.	Repair or replacement
	Motor has failed.	Replace the motor
Light does not work, motor does not work.	House fuses have blown.	Replace the fuses
	Mains power cable is loose or disconnected.	Repair or replacement
Oil leakage.	The valve and air exhaust outlet are not tightly sealed.	Repair or replacement
	Leakage from the connection of chimney and cover.	Repair or replacement
Lights does not work.	Broken or faulty LED.	Replace the LED light
Insufficient suction.	The distance between the cooker hood and the hob top is too far.	Securely attach the cooker hood
The Cooker hood is tilted.	The fixing screw is not tight enough.	Tighten the screw.



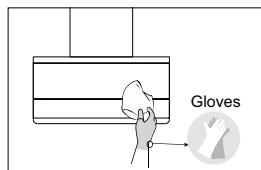
NOTE:

Any electrical repairs to this appliance must comply with local, state and federal laws. Please contact the service center if you have any doubts before attempting any of the above actions. Always disconnect the unit from the power source before opening it.

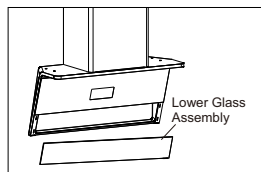
Maintenance

Daily cleaning

1. This product must be cleaned and maintained frequently for optimal operating performance and longer service life.
It is recommended to clean all surfaces with a wet cloth (neutral detergent maybe used) to maintain the appearance and hygiene of the product.

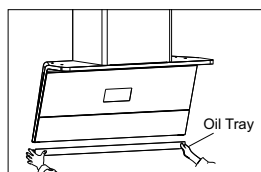


2. Use a Phillips screwdriver to unscrew the screws that fix the lower glass, and remove the lower glass assembly.
3. It is best to soak the lower glass assembly in warm water mixed with detergent for a while, then wipe it clean with a cloth, and rinse it with clean water once more.



Note: ① Please wear the thick gloves while cleaning.
② When installing the glass back, please pay attention to the installation direction of the glass and do not install it upside down.

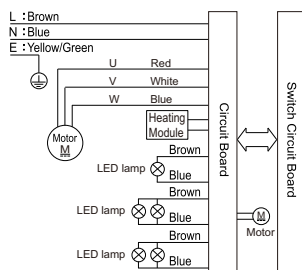
4. When the oil tray is filled with oil, please clean it in time. The oil tray disassembly procedure is as follows: hold the lower part of the oil tray with both hands, and remove the oil tray horizontally; After cleaning, install the oil tray in reverse order. When the oil level in the oil tray reaches a certain level, it should be cleaned in time to prevent overflow. It is recommended to clean the oil tray once a week. (Because the oil tray is long, please hold it firmly when the oil tray is removed so as not to spill the oil.)



Monthly cleaning

Periodically clean the surface of the cooker hood with a damp cloth and neutral detergent. Unplug the power cable before cleaning.

Electrical schematic diagram



Global Website

<https://global.fujioh.com>

FUJIOH INTERNATIONAL TRADING PTE. LTD.

Southeast Asia Regional Headquarters

3014A Ubi Road 1 #06-04, Singapore 408703

Tel: (65) 6286 3286 Fax: (65) 6285 3285

E-mail: fit@fujioh.com.sg

FUJIOH MARKETING MALAYSIA SDN. BHD.

23, Jalan Serendah 26/39, Section 26, 40400

Shah Alam, Selangor, Malaysia

Tel: (60) 35103 6826

E-mail: enquiry@fujioh.my

Rev1 2025



Website