

-FUJIOH-

Storage Water Heater

Operating / Installation Manual

Global Website

www.fujioh.com

FUJIOH INTERNATIONAL TRADING PTE.LTD.

Southeast Asia Regional Headquarters

3014A Ubi Road 1 #06-04, Singapore 408703

Tel : (65) 6286 3286 Fax : (65) 6285 3285

E-mail : fit@fujioh.com.sg

Rev1 2022

FZ-SH3015
FZ-SH3030

Please read this manual carefully
before using this appliance.

CONTENTS

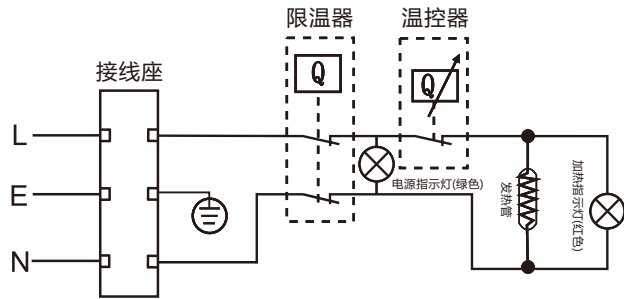
Security Characteristics.....1
Safety Valve.....1
Correct Disposal.....2
Operating Procedures.....2
Product Features.....2
Specifications.....3
Product Structure.....3
Installation Instructions.....3
Pipe Connection.....6
Electrical Connection.....7
Wiring Diagram.....8
Maintenance.....8
Troubleshooting Guide.....9
Packing List.....9

故障现象	原因分析	解决方法
指示灯不亮。	1. 没有连接电源或电源连接不良。 2. 指示灯受损。 3. 限温器启动。	让专业的技术人员检查线路及指示灯。
水温温度不够。	1. 发热管有缺陷。 2. 温控器发生故障。 3. 热水器没有通电。	1. 更换发热管。 2. 请致电客户服务中心维修。 3. 检查电源。
无热水从水龙头处供应。	1. 主水阀没有打开。	1. 打开主水阀。
漏水。	1. 水管连接处漏水。 2. 密封圈处漏水。	1. 拧紧接头部位。 2. 拧紧发热管或更换密封圈。
电源跳闸。	1. 发热管短路。	1. 更换发热管。

装箱清单

序号	名称	数量 (个)
1	储水式热水器	1
2	安装使用说明书	1
3	膨胀螺栓	2
4	安全阀	1
5	引流管	1
6	安装支架	2

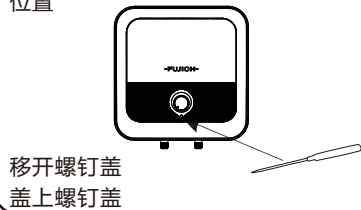
线路图



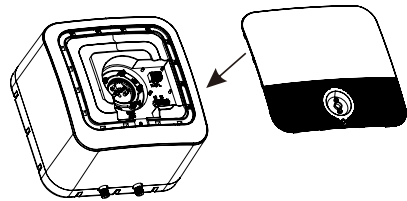
维护

- 所有维护操作必须由专业有资格的人员进行。
- 在联系客户服务之前，确保故障不是由暂时缺水引起的。
- 在移除安全阀前，需完全排出内胆中的水。在拆卸阀门之前，需要关闭热水器的电源，使内胆冷却(也必须断开总开关)。

打开螺钉盖的方法：将工具插入螺钉盖位置



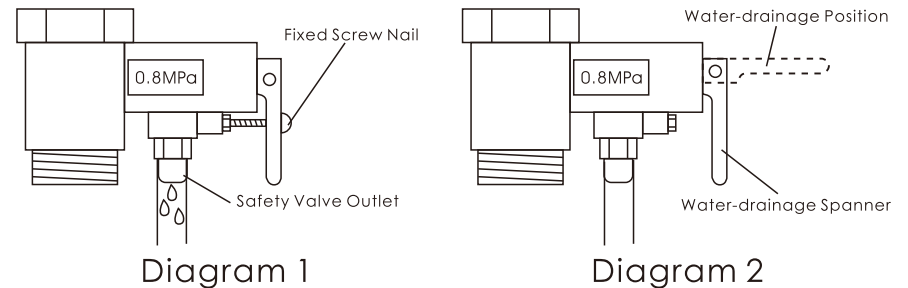
打开维修盖，盖上维修盖



SECURITY CHARACTERISTICS

- If the supply cord is damaged, it must be replaced by the manufacturer, its service agent or similarly qualified staff in order to avoid a hazard.
- The pressure-relief device is to be operated regularly to remove lime deposits and to verify that it is not blocked.
- CAUTION: In order to avoid a hazard due to inadvertent resetting of the thermal cut-out, this appliance must not be supplied through an external switching device, such as a timer, or connected to a circuit that is regularly switched on and off by the utility.
- This appliance could be used by children aged over 8 and people who have physical, sensory or mental disabilities or not enough experience and knowledge only if they have been given supervision or instruction about use of the appliance by a person responsible for their safety. Children should not play with the appliance, nor do the cleaning and maintenance without supervision.
- This appliance must be installed with a safety valve at the inlet pipe (blue indicator). When the tank's pressure is over 0.8MPa, the safety valve will be automatically activated, then water will be discharged through the drain pipe outlet (Diagram 1). In any condition, this outlet must not be blocked.
- If there is a need to empty the water in the tank, first, close the mains water. Then remove the fixed screw nail on the safety valve and lift up Water-drainage Spanner (see diagram 2) to let the water flow out naturally.
- The water may drip from the discharge pipe of the pressure-relief device.

SAFETY VALVE



CORRECT DISPOSAL

- Appliance must be fixed with device compliance IEC 61770.

This symbol on the product, or in its packaging, indicates that this product may not be treated as household waste. Instead, it should be taken to the appropriate waste collection point for the recycling of electrical and electronic equipment. By ensuring this product is disposed of correctly, you will help prevent potential negative consequences for the environment and human health, which could otherwise be caused by the inappropriate waste handling of this product. For more detailed information about the recycling of this product, please contact your local council, your household waste disposal service, or the shop where you purchased the product.



OPERATING PROCEDURES

- Check all the piping connection for leakage before turning on the electric power of the heater.
- Make sure that the tank is fully filled up with water, otherwise it will cause damage to the heating elements.
- Turn on the mains electrical power supply and then adjust the temperature knob clockwise for higher temperature and anti-clockwise for lower temperature.
- The water heater needs to be turned on for a certain period of time to reach the acceptable temperature.
- During the heating process, it's normal to see a slight drip at the safety valve. Please do not cover up the safety valve outlet hole.
- Connect this outlet hole to a discharge pipe. Water may drip from the discharge pipe of the safety valve, so this pipe must be kept open to allow water to flow out.
- The safety valve is to be operated regularly (preferably at least every six months) to remove lime deposit and to ensure that it is not blocked.

To adjust the shower temperature

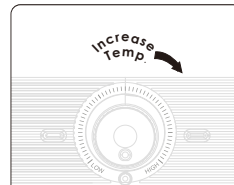
The shower temperature is altered by increasing or decreasing the power control via the Control Knob.

To increase the shower temperature

Turn the Control Knob clockwise towards the HIGH sign; this will increase the water temperature.

To decrease the shower temperature

Turn the Control Knob anti-clockwise towards the LOW sign; this will decrease the water temperature.



PRODUCT FEATURES

- Unique design.
- Sapphire golden silicon tank which is rust-proof, erosion-proof and has a high efficiency and a long life span.
- Energy saving with minimum heat loss. The water temperature can be maintained up to 48 hours after the power is turned off.

电气连接

关掉电源。

电源线入口点如下图所示。

连接热水器的电源线及接线座的路径如图 (Fig.1) 。

- 火线连接接线座标记
- 接地连接接线座标记
- 零线连接接线座标记



注意:紧固接线座螺钉, 确保没有电源线绝缘被困在螺钉下。

连接松动会导致电源线过热。 在盖上盖子之前, 不要接通电源。

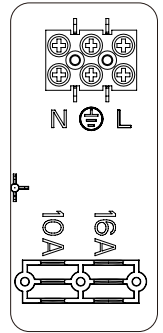
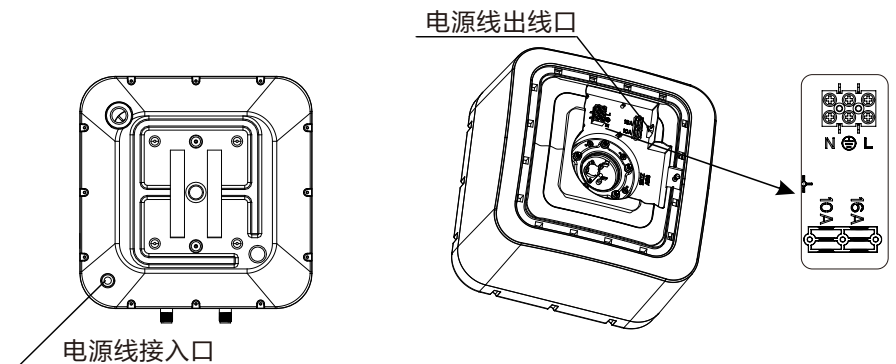


Fig.1

- 电气连接必须由有资格的电工操作。
- 电源直接连接到与地面连接的连接器的上。 接地线必须为绿色/黄色, 并连接在标有地线符号 ⊕ 的端子上。
- 热水器必须连接到淋浴者无法接触到的电源上。
- 所有布线必须符合当地要求。 如有疑问, 请咨询有资格的电工。

注意:所有管道连接必须在电气连接之前完成。 将内胆装满水, 打开水龙头, 让水从内胆中流出, 直到所有的空气都被排出。 内胆装满水后通电。

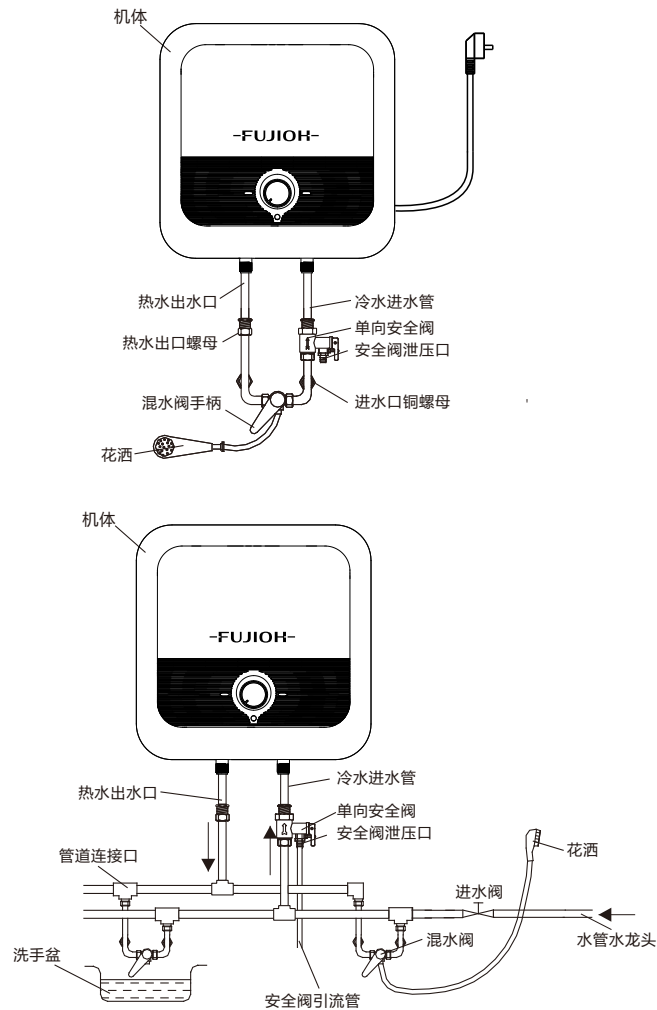
接线座位置和电源线进口/出口位置 :



管道连接

- 所有管道部件为BSP 1/2" 管。在进水管的螺纹部分(标蓝色)缠上一些白色胶带。
- 将安全阀固定在进水管上，然后连接到总水管的冷水管上。
- 将引流管装在安全阀上，从引流管排水(排水管接头出水管-示意图5)。
- 引流管应持续向下安装，且应在无霜环境下安装。
- 将热水管(红色标记)连接到出水管上。
- 不要将安全阀和所有管道连接过紧，否则可能会损坏连接。
- 在安装水龙头和淋浴前，要确保所有管道都是干净的。

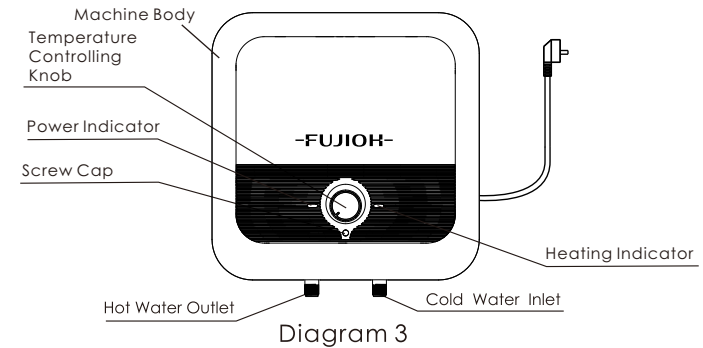
图5



SPECIFICATIONS

Model	FZ-SH3015、FZ-SH3030		
Rated Volume	15L、30L	Product Size	395x395x343 mm (15L) 445x445x386 mm (30L)
Rated Voltage	220V-240V	Rated Power	2000W (15L)、2500W (30L)
Rated Pressure	0.8MPa	Rated Frequency	50/60Hz
Rated Water Temperature	75°C	Heating Efficiency	>90%
Water-proof Degree	IPX4	Structure Mode	Hermetically closed typed water storage style
N.W(kg)	9.8kg(15L)		12.9kg(30L)

PRODUCT STRUCTURE



INSTALLATION INSTRUCTIONS

- The installation for electrical and plumbing work must be carried out by qualified personnel, according to the installation instructions and complying with the local authority regulations.
- The appliance has to be installed as close as possible to the point where it is to be used in order to reduce heat loss along the pipes. To facilitate maintenance, allow a distance of 500mm for easy access to the electrical parts.
- This appliance should be mounted on a solid cement wall, preferably close to the power source's sockets and water source.
- Please use our company's fitted accessories to mount this appliance.
- Before determining the position of bolt hole, make sure that the appliance is more than 200mm from the ground or ceiling board. This will leave space for maintenance when necessary.
- Assembling method: After selecting the proper fixing positions, use the expansion bolt to secure the hanging board firmly, then hook the water heater. (Diagram 4)

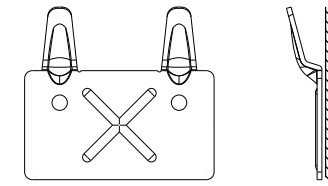
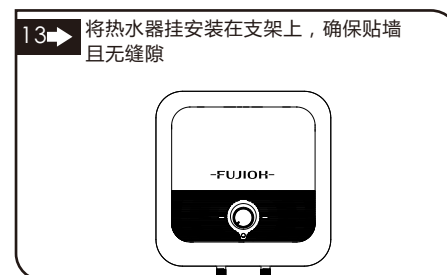
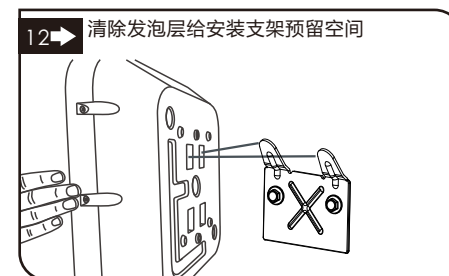
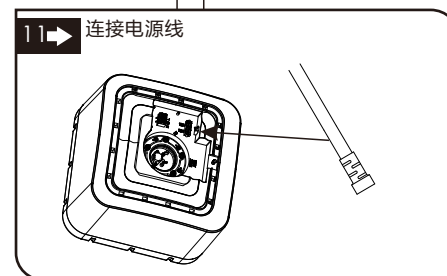
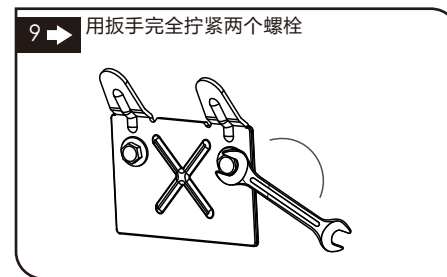
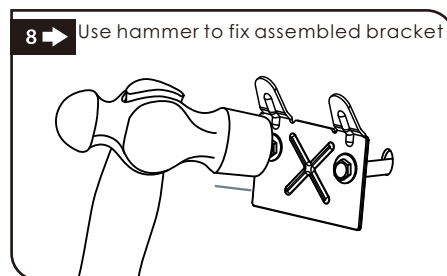
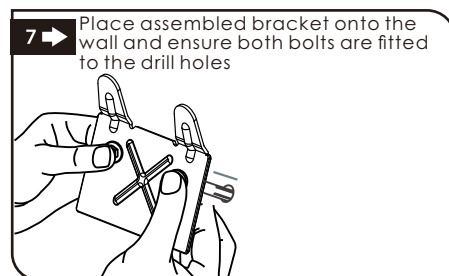
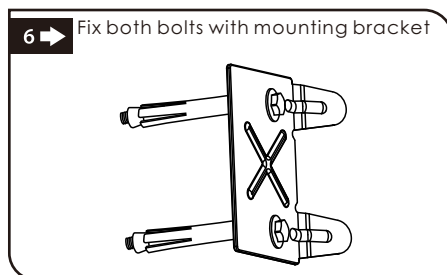
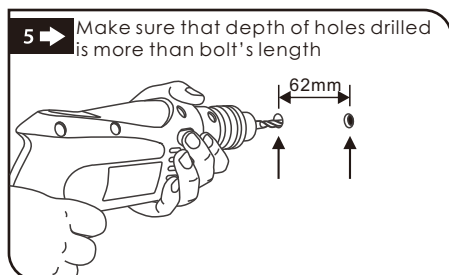
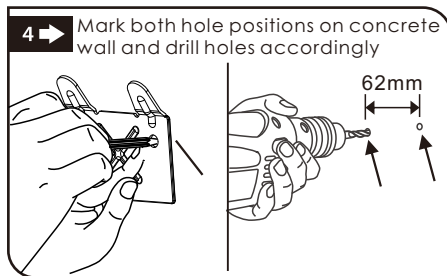
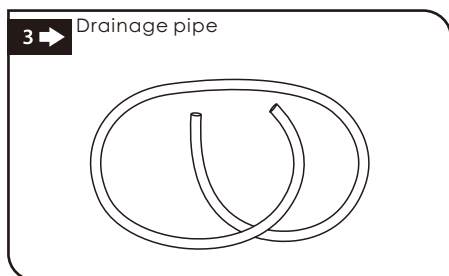
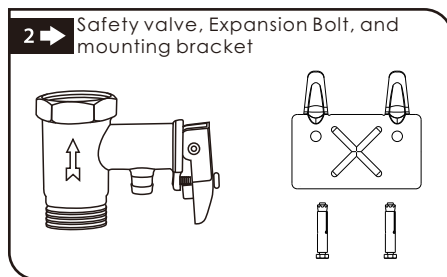
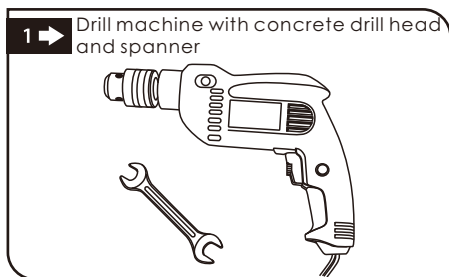
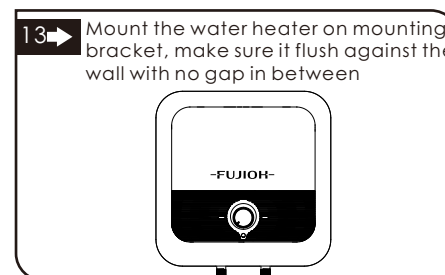
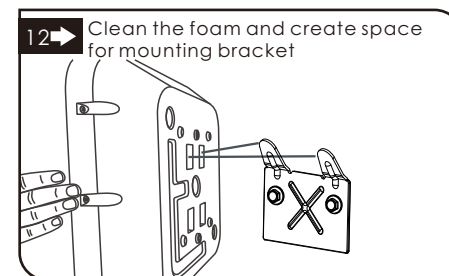
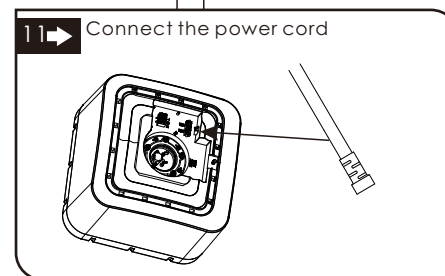
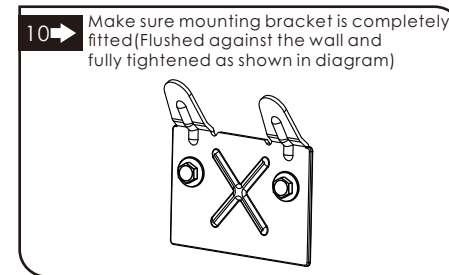
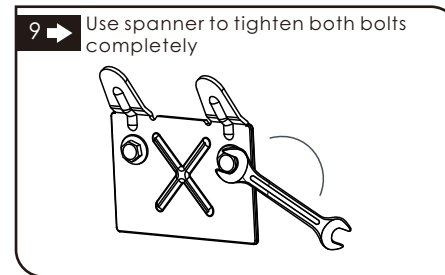
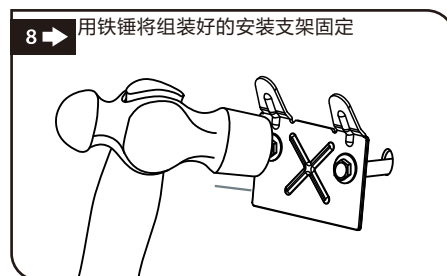
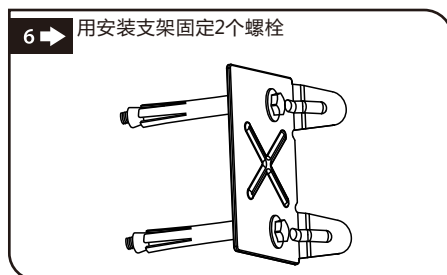
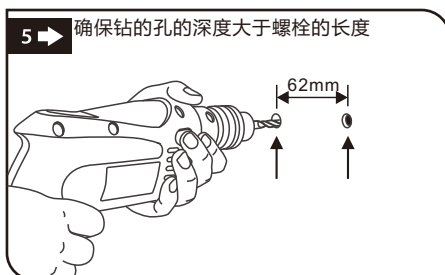
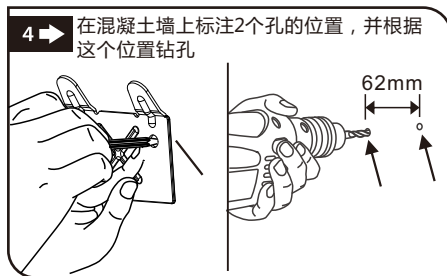
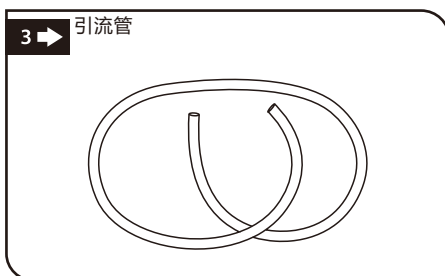
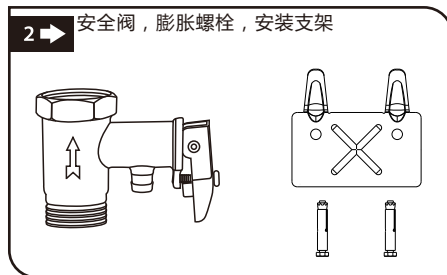
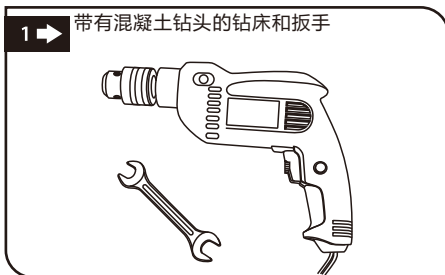


Diagram 4

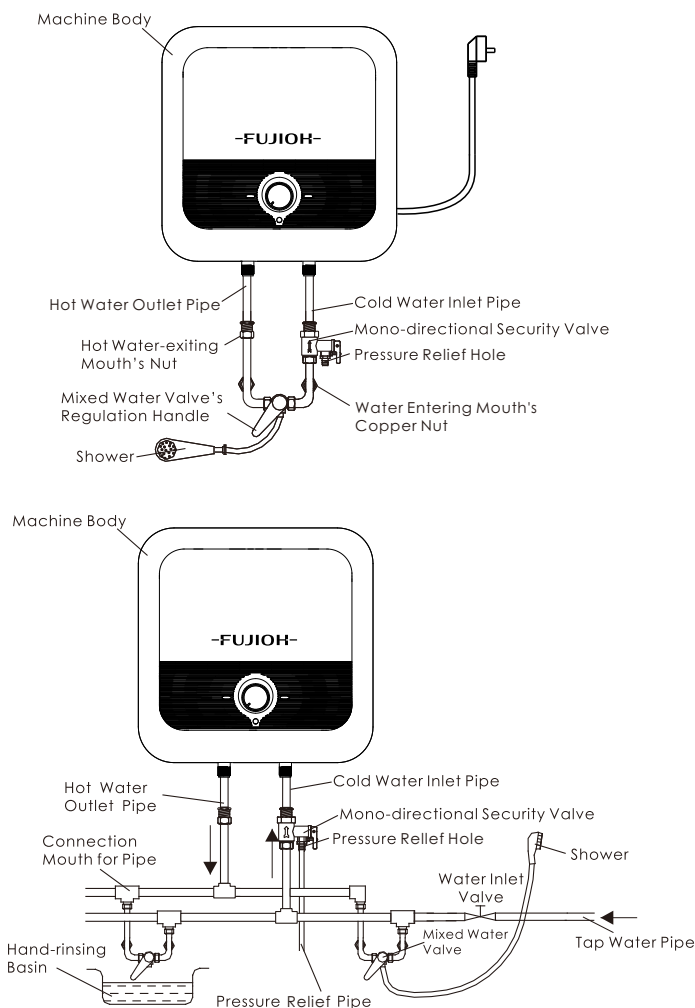




PIPE CONNECTION

- All piping parts are BSP ½". Wind some white tape at the thread sector of the inlet pipe (marked blue).
- Fix the safety valve to the inlet pipe and then connect it to the cold water pipe of the mains.
- Install a water drainage pipe to the safety valve to drain away water discharge.
- Install the drainage pipe in a continuously downward direction and in a frost free environment.
- Connect the hot water pipe (marked red) to the outlet pipe.
- Do not over-tighten the safety valve and all pipes joint as it may cause damage to the joints.
- Make sure all pipes are clean before installing the taps and showers.

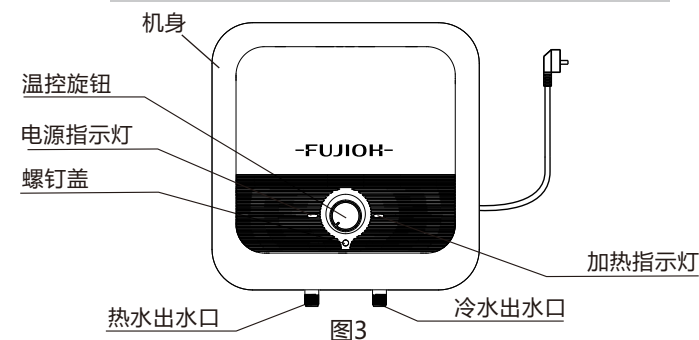
Diagram 5



规格

型号	FZ-SH3015、FZ-SH3030		
额定容量	15L、30L	产品尺寸	395x395x343 mm (15L) 445x445x386 mm (30L)
额定电压	220V-240V~	额定功率	2000W (15L)、2500W (30L)
额定压力	0.8MPa	额定频率	50/60Hz
额定水温	75°C	热效率	>90%
防水等级	IPX4	结构模式	密闭式储水式
净重.(kg)	9.8kg(15L)		12.9kg(30L)

产品结构



安装说明

- 电气和管道工程的安装必须由有资质的人员根据安装说明和当地有关规定进行。
- 此电热水器必须安装在尽可能靠近使用的地方，以减少沿管道的热损失。为便于维护，应与电气部件保持500mm的距离。
- 此电热水器应安装在坚实的水泥墙上，最好靠近电源插座和水源。
- 请使用本公司配套的配件安装此电热水器。
- 确定螺栓孔位置时，应确保电热水器距离地面或天花板200mm以上。这将为必要时维修留下空间。
- 组装方法:选择适当的固定位置后,用膨胀螺栓将吊板牢固固定,然后钩住热水器 (图4)。

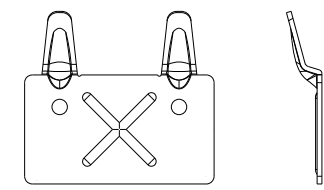


图4

正确的处理

- 设备必须按照IEC 61770标准进行处理。

本产品或其包装上的标志表明，本产品不能作为生活垃圾处理。相反，它应该被带到适当的废物收集点，作为回收电器和电子设备。通过确保本产品得到正确处理，您将有助于防止因本产品的不当废物处理可能对环境 and 人类健康造成的潜在负面后果。欲了解更多关于回收利用该产品的详细信息，请联系您当地的委员会，您的家庭垃圾处理服务机构，或您购买该产品的商店。



操作程序

- 打开热水器电源前，检查所有管道连接是否有泄漏。
- 确保内胆必须注满水，否则会损坏加热元件。
- 打开主电源，顺时针方向调节温度旋钮，温度会升高，逆时针方向调节，温度会降低。
- 热水器需要开启一定的时间才能到达可接受的温度。
- 在加热过程中，安全阀处有轻微的滴漏是正常的。请不要盖住安全阀出口孔。
- 将这个出口孔连接到引流管。安全阀的引流管可能会有滴水，因此必须保持安全阀的排水管开着，使水流出。
- 安全阀应定期操作(最好至少每六个月操作一次)，以清除石灰沉积物（水垢），并确保其不堵塞。

调节淋浴温度

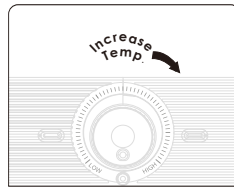
通过控制旋钮增加或减少电源控制来改变淋浴温度。

提高淋浴温度

将控制旋钮顺时针向HIGH标志方向旋转:这样会升高水温。

降低淋浴温度

逆时针方向旋转控制旋钮，指向LOW标志; 这样会降低水温。



产品特性

- 独特的设计。
- 蓝宝石金硅内胆，防锈、耐腐蚀、效率高、寿命长。
- 节能，热损失最小。断电后水温可维持48小时。

ELECTRICAL CONNECTION

ELECTRICAL CONNECTION

WARNING: THIS UNIT MUST BE EARTHED.

SWITCH OFF THE ELECTRICITY SUPPLY.

The cable entry points are shown in the figure below. Route the cable into the machine body and connected the terminal block (Fig. 1) as follows:

- Live cable to terminal marked
- Earth cable to the terminal marked
- Neutral cable to terminal marked



IMPORTANT: Fully tighten terminal block screws and ensure that no cable insulation is trapped under the screws. Loose connections can result in cabling overheating. DO NOT switch on the electricity supply until the cover has been fitted.

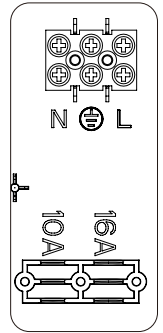
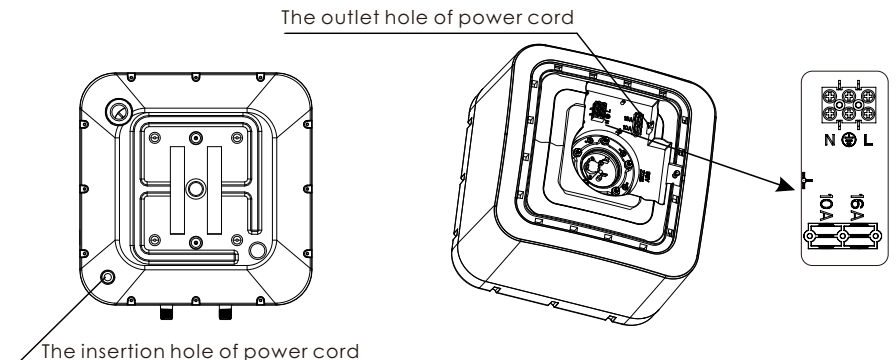


Fig.1

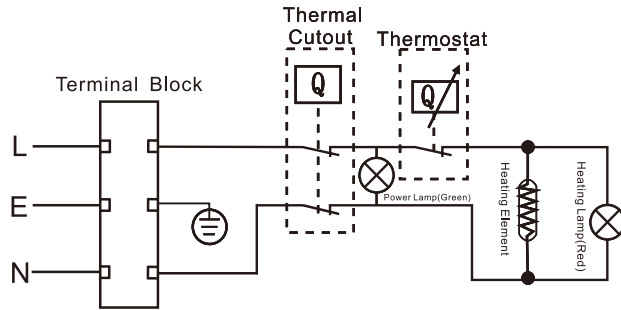
- The electrical connection must be done by a qualified electrician.
- The electrical supply is connected directly to the connector provided with the earth connection. The earth wire must be green/yellow in colour and fixed to the terminal marked by the symbol (⊕).
- The heater must be connected to the electricity supply that is out of reach from the person using the shower.
- All wiring must conform to local requirements. If in doubt, please consult a qualified electrician.

Note: All plumbing connections must be completed before making the electrical connections. Fill the tank with water and turn on the tap to let the water discharge from the tank until all the air has been expelled out. Electricity should be passed only after water tank is full of water.

Terminal block position and power cord insertion / outlet position:



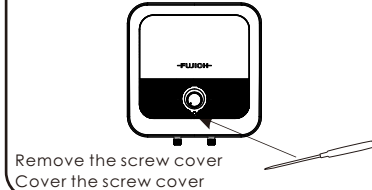
WIRING DIAGRAM



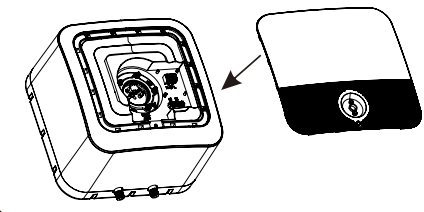
MAINTENANCE

- All maintenance operation must be carried out by a qualified personnel.
- Before contacting the customer service, make sure the suspected failure is not caused by a temporary lack of water.
- To discharge the water completely from the tank, remove the safety valve from the water heater. Before removing the valve, the power of the heater needs to be switched off for the tank to cool down (outlet connection must also be disconnected).

Method for removing and installing screw cover: Insert the screwdriver into the screw cover



Open the maintenance cover
Close the maintenance cover



安全特性

- 如果电源线损坏，必须由制造商、其服务代理或具有类似资质的人员更换，以避免危险。
- 定期操作减压装置，以清除石灰沉积物，并验证其是否堵塞。
- 注意: 为了避免由于限温器的意外复位而造成的危险，此设备不能通过外部开关设备供电，如定时器，或连接到由公用设施定期开关的电路。
- 本设备如果供8岁以下儿童使用，或有身体、感官或智力残疾或缺乏足够的经验和知识的人使用，必须由安全负责人对设备的使用进行监督指导。儿童不要随意玩耍，也不要无人监督的情况下进行清洁和保养。
- 此电热水器在进水管蓝色指示处必须安装一个单向安全阀，当内胆压力超过 0.8 MPa 时，安全阀会自动激活，水会从排水管出口流出(图示1)。在任何情况下，这个出口都不能被堵塞。
- 如果需要清空内胆中的水，首先，关闭总水源。取下安全阀上的固定螺丝钉，抬起塑料手柄(见图2)，让水自然流出。
- 水可能会从安全阀的排泄管中滴水。

安全阀

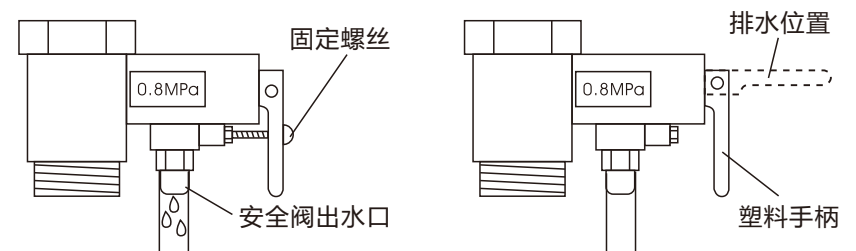


图1

图2

TROUBLESHOOTING GUIDE

目录

安全特性	1
安全阀	1
正确的处理	2
操作程序	2
产品特性	2
规格	3
产品结构	3
安装说明	3
管道连接	6
电气连接	7
接线图	8
维护	8
常见故障处理方法	9
装箱清单	9

Symptom	Cause	Solution
Indicator light does not light up.	1. The power source is not connected or badly connected. 2. Indicator is damaged. 3. The overheating sensor is activated.	Get the professional technician to check the electrical wiring and indicators.
Water Temperature is not warm enough.	1. The heating element is defective. 2. Malfunction of temperature controller. 3. No power supplied to water heater.	1. Replace the element. 2. Call customer service for repair. 3. Check power supply.
No water coming out of the warm water tap.	1. Main water valve is not turned on.	1. Turn on the main water valve.
Water leakage.	1. Leaking from plumbing connection. 2. Leaking at gasket.	1. Tighten the connection. 2. Tighten the heating element or replace the gasket.
Electrical mains is tripped.	1. Heating Element short circuit.	1. Replace heating element.

PACKING LIST

No.	Name	Unit(piece)
1	Storage Water Heater	1
2	Operating/Installation Manual	1
3	Expansion Bolt	2
4	Safety Valve	1
5	Drainage Pipe	1
6	Mounting Bracket	1

-FUJIOH-

储水式热水器

安装使用说明书

FZ-SH3015

FZ-SH3030

使用前请仔细阅读此手册