

GAS HOB/ FH-GS55



Flame Failure Safety Device
Flame Control
Heat Deflector
Aluminium Alloy Venturi



Battery Ignition
Toughened Glass (SVGL)
Cast Iron Pan Support
Push And Turn Knob

1 GAS HOB
LIMITED WARRANTY*
YEAR

LIFETIME WARRANTY AGAINST
TOUGHENED GLASS SHATTERED*

Make cooking a breeze

機能的なコンロで、スムーズな調理を。

Get real with our gas hob that exudes functionality and durability.

With up to three burners placed at optimal positions and black matt enamelled coating pan support, the GS55 gas hob is practical for whipping up multiple dishes at one go. Designed with safety in mind, you can now expect longer life span of our gas hob with rust-resistant venturi and safety valve.



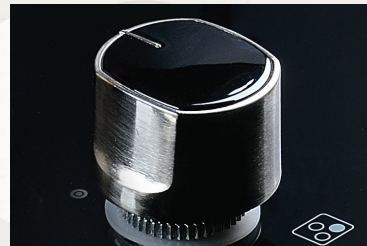
ADVANCED FUNCTIONS

01/ Heat Deflector



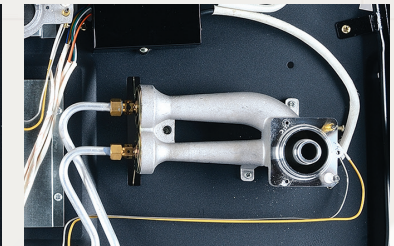
Deflect and reduce the thermal heat on the top plate and knobs

02/ Knobs



Elegant and glossy design

03/ Venturi



Rust-resistant aluminium alloy

FH-GS5530 SVGL

FH-GS5530 SVSS

FH-GS5520 SVGL

FH-GS5520 SVSS


SPECIFICATIONS

Number of Burner	3	3	2	2
Color	Black Glass (Toughened Glass)	Stainless Steel (SUS304)	Black Glass (Toughened Glass)	Stainless Steel (SUS304)
Dimensions [mm]	W880 x D520 x H100	W865 x D505 x H100	W780 x D460 x H100	W750 x D450 x H100
Ignition Type	Battery Operated (Size D 1.5V)	Battery Operated (Size D 1.5V)	Battery Operated (Size D 1.5V)	Battery Operated (Size D 1.5V)

HEATING LOAD L.P. GAS [kW]

Left	5.0	5.0	5.0	5.0
Centre	1.4	1.4	-	-
Right	5.0	5.0	5.0	5.0
All Burners On	11.4	11.4	10.0	10.0

HEATING LOAD TOWN GAS [kW]

Left	4.0	4.0	4.0	4.0
Centre	1.4	1.4	-	-
Right	4.0	4.0	4.0	4.0
All Burners On	9.4	9.4	8.0	8.0

CUT-OUT DIMENSIONS & REPLACEMENT SIZE [mm]

Cut-out Dimensions	W705 x D405	W705 x D405	W650 x D350	W650 x D350
Front Allowance & Rear Allowance	FA56 x RA58	FA20 x RA85	FA55 x RA58	FA24 x RA84
Replacement Size	W(705-820) x D(405-470) x R60	W(705-820) x D(405-470) x R60	W(650-720) x D(350-410) x R60	W(650-720) x D(350-410) x R60
Height	100	100	100	100

INSTALLATIONS

